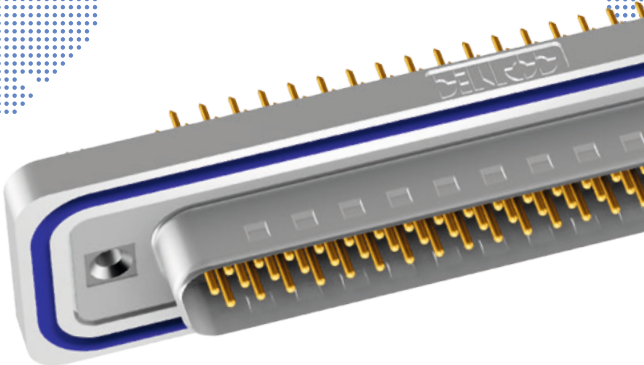
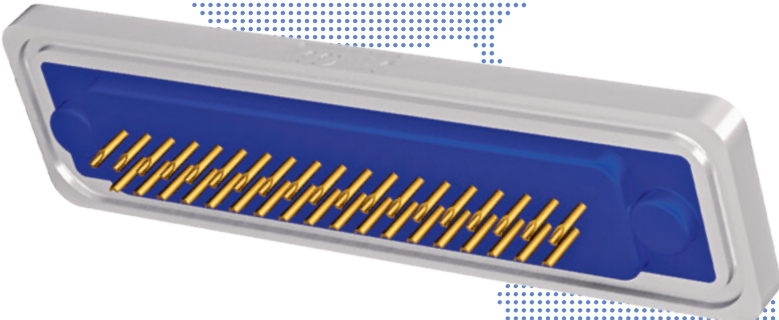
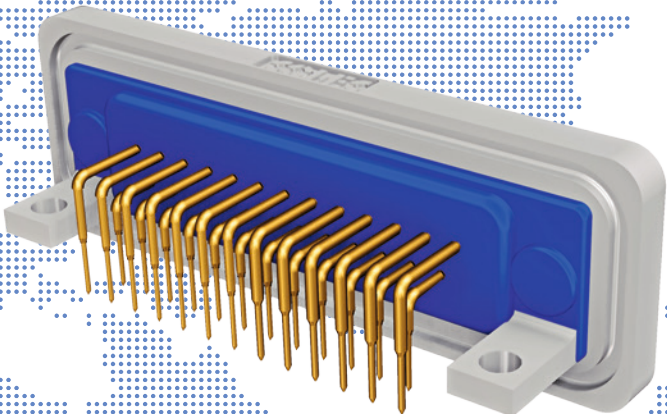


SECTION 8

IP67 FILTER D-SUB CONNECTORS





IP67 FILTER D-SUB CONNECTORS

Part Number Creator

6 S T F 0 9 P A M 0 4 B 3 0 X

Product Line

- 4* = Shell brass tin plated with plastic frame or without frame
- 6 = Shell brass tin plated with metal frame (Standard)
(*on request)

Variations

- STF = D-Subminiatur Standard filtered
- HDF = D-Subminiatur High Density filtered

No. of pos. for STF

- 09 = 09-pos.
- 15 = 15-pos.
- 25 = 25-pos.
- 37 = 37-pos.
- 50 = 50-pos.

No. of pos. for HDF

- 15 = 15-pos.
- 26 = 26-pos.
- 44 = 44-pos.
- 62 = 62-pos.
- 78 = 78-pos.

- P = Plug connector (Standard)
(Socket connector on request)

Quality class / Plating code for contacts

- A = Quality class 3 = 50 mating cycles
- B = Quality class 2 = 200 mating cycles
- C = Quality class 1 = 500 mating cycles

Termination

- M = Solder cup only for STF
- R = Solder pin, straight
- T = Solder pin, angled, 4.80 mm only for STF
- U = Solder pin, angled, 7.00 mm only for STF
- Z = Solder pin, angled, 11.80 mm only for STF
- Y = Solder pin, angled, 5.60 mm only for HDF

Capacitance

- 03 = 370 pF ± 20% tolerance
- 04 = 830 pF ± 20% tolerance
- 05* = 1300 pF ± 20% tolerance * not applicable for HDF

Mounting style

- A1 = Riveted through hole for cable mount / Shell without sealing frame
- B3 = 4-40 UNC threaded insert
- B5 = Threaded lock for 4-40 UNC front mounting
- E2 = 4-40 UNC threaded rear spacer with PCB clip, PCB .063" / 1.60 mm
- S2 = Metal bracket 4-40 UNC threaded insert
- S4 = Metal bracket 4-40 UNC threaded insert and PCB clip
- R2 = Metal bracket 4-40 UNC threaded insert
- R4 = Metal bracket 4-40 UNC threaded insert and PCB clip

- OX = Standard

IP67 FILTER D-SUB CONNECTORS

Product specification

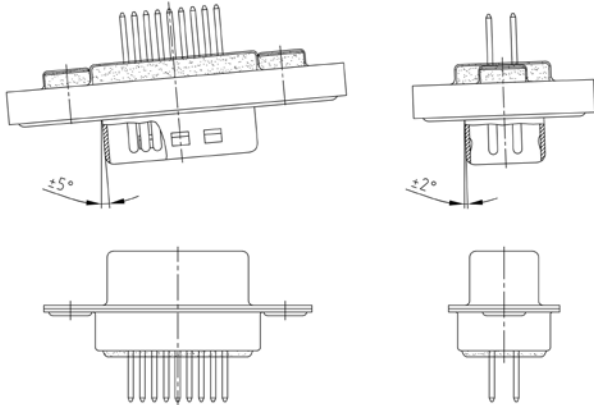
Basic material	IP67 Filter D-SUB Standard 9-, 15-, 25-, 37-, 50-pos.	IP67 Filter D-SUB High Density 15-, 26-, 44-, 62-pos.	IP67 Filter D-SUB SlimCon 9-, 15-, 25-pos.	
Contact	Copper alloy			
Contact plating	Gold over nickel			
Insulator	PBT GF UL94 V-0			
Shell	Brass tin plated		Zinc die-cast nickel plated	
Seal	O-Ring Silicone		Sealing Gasket Silicone or EMC	
Technical Data				
Dielectric with standing voltage	424 V DC	300 V DC	424 V DC	
Working voltage	100 V DC* *depending on isolation coordination refer to DIN VDE 0110 / IEC 664-1			
Voltage surge 10/700 μ s	300 V			
Current rating	7.5 A (UL) / 5 A (CSA, VDE)	3 A (UL, VDE) / 2,5 A (CSA)	5 A	
Contact resistance	max. 10 m Ω prior to stressing Δ R max. 10 m Ω after stressing per IEC 60807-2			
Insulation resistance	≥ 1 G Ω			
Capacitor Values	370 pF \pm 20 % 830 pF \pm 20 % 1300 pF \pm 20 %	370 pF \pm 20 % 830 pF \pm 20 % other capacitor values on request	370 pF \pm 20 % 820 pF \pm 20 % 1200 pF \pm 20 %	
Operating temperature	-25 °C bis/to +105 °C	-25 °C bis/to +85 °C	-40 °C bis/to +105 °C	
Humidity	40 °C / 85% Relative humidity			
Mating and unmating forces	9-pos. \leq 30 N 15-pos. \leq 50 N 25-pos. \leq 83 N 37-pos. \leq 123 N 50-pos. \leq 167 N	15-pos. \leq 50 N 26-pos. \leq 84 N 44-pos. \leq 120 N 67-pos. \leq 170 N	9-pos. \leq 30 N 15-pos. \leq 50 N 25-pos. \leq 83 N	
Quality class	A = Quality class 3 = 50 mating cycles B = Quality class 2 = 200 mating cycles C = Quality class 1 = 500 mating cycles			
Recommended wavesolder parameters	Preheating		Solder terminal dipping parameters	
	max. temperature	duration (max.)	max. Solder bath temperature	max. terminal immersion time
IP67 Filter D-SUB Standard	100 °C	30 s	260 °C	5 s
IP67 Filter D-SUB High Density	100 °C	30 s	260 °C	5 s
IP67 Filter D-SUB SlimCon	150 °C	180 s	265 °C	8 s

Technical specifications are subject to change without notice

IP67 FILTER D-SUB CONNECTORS

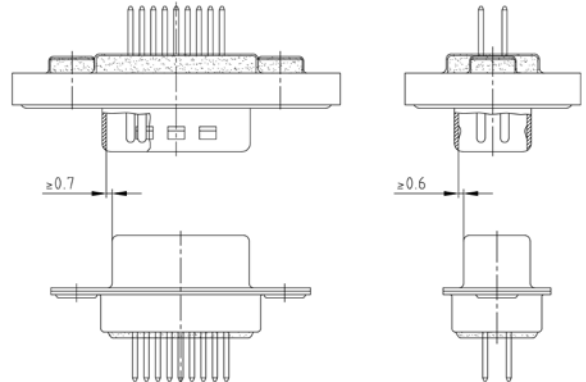
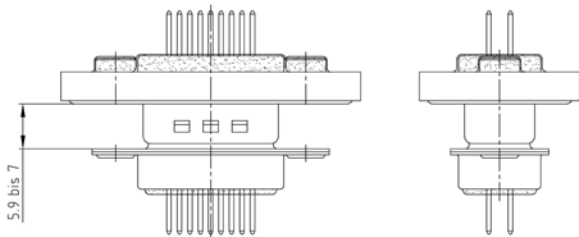
Mating conditions

Max. tilt angle for connector mating



Range for safe contact

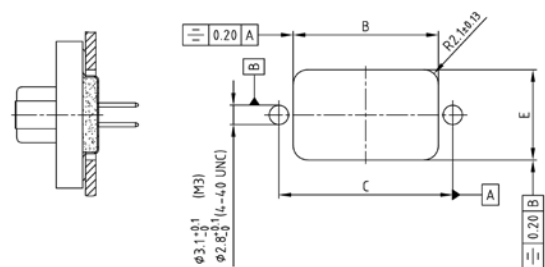
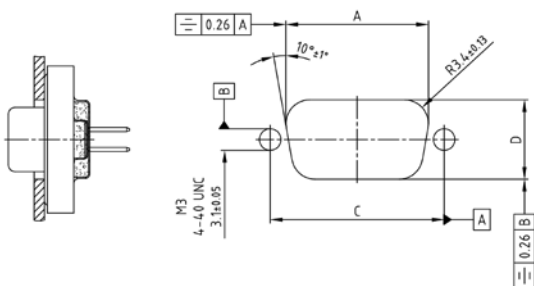
Lock-in range



Panel cut-out

Rear panel mounting

Front panel mounting



Shell size	A ± 0.1	B ± 0.1	C ± 0.1	D ± 0.1	E ± 0.1
9	20.50	20.90	25.00	11.40	13.00
15	28.80	29.20	33.30	11.40	13.00
25	42.50	42.90	47.04	11.40	13.00
37	59.10	59.40	63.50	11.40	13.00
50	56.30	57.00	61.10	14.10	15.80

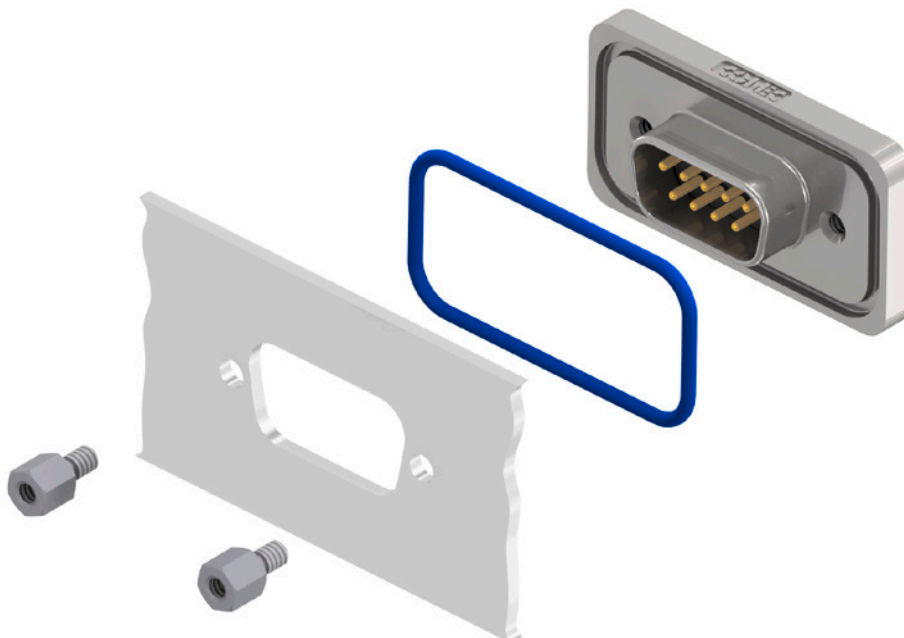
IP67 FILTER D-SUB CONNECTORS

Panel mounting

Front panel mounting



Back panel mounting

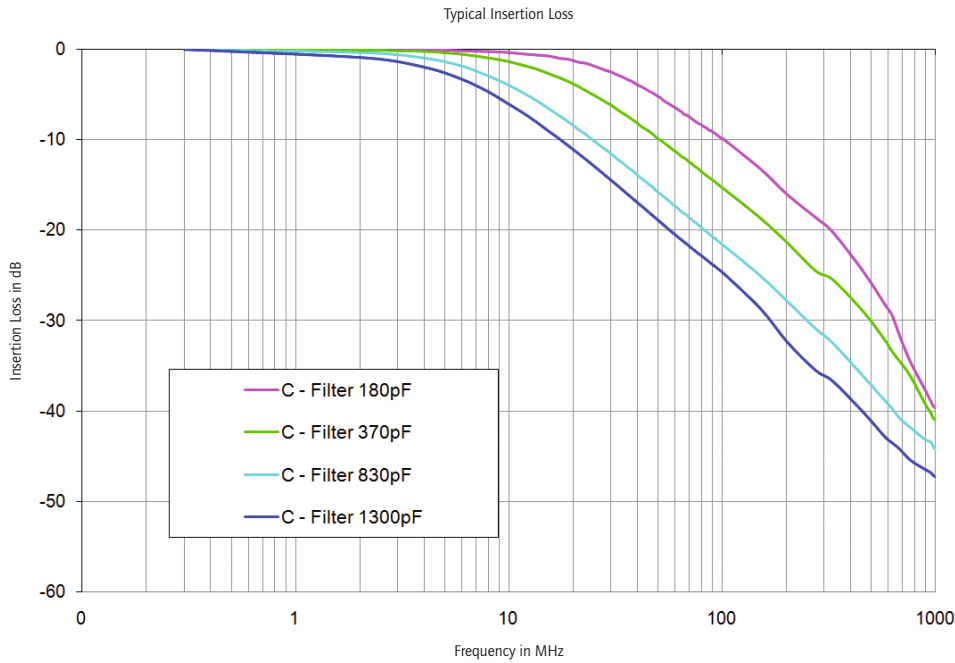


The hex bolts illustrated here (4-40 UNC or M3 threads) are included in the delivery complement of every connector with a sealing frame. The length of this spacer has been selected to accommodate a panel thickness of .063"/1.6 mm (Standard) / .051"/1.3 mm (CONEC SlimCon) such that it does not extend beyond the plug-in height. Material: stainless steel.

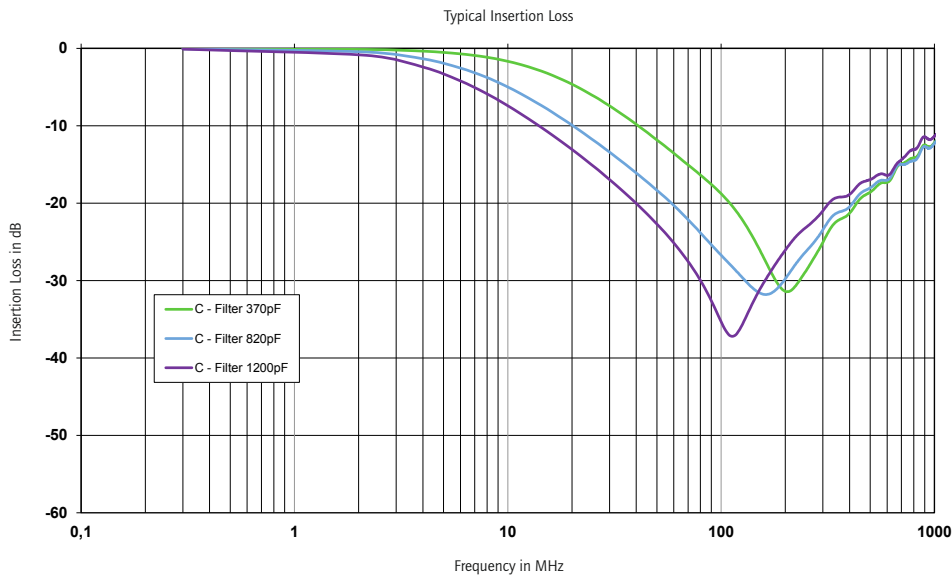
IP67 FILTER D-SUB CONNECTORS

Insertion loss

C-Filter with planar filter technology



C-Filter with chip technology (CONEC SlimCon)

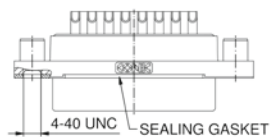
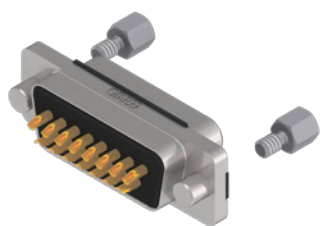


Technical specifications are subject to change without notice.

IP67 FILTER D-SUB CONNECTORS
CONEC SlimCon, C-Filter, Standard

Solder cup
 Precision machined contacts, AWG20

4-40 UNC threaded insert



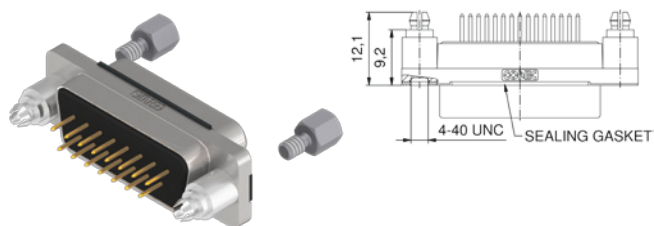
One-piece zinc die-cast nickel plated shell
 EMC Gasket or Silicone Gasket
 Quality class 3 (A) = 50 mating cycles
 Stainless steel hex bolts are supplied loose
 On request:
 • Quality class 1 (C) = 500 mating cycles
 • Gaskets also available separately

No. of poles	Current rating [A]	Working voltage [V]	Quality class	Capacitance [pF]	EMC gasket	Silicone gasket	Part No. Socket contact	Part No. Plug contact
09	75 (UL) / 5 (CSA VDE)						15-008983	15-008943
15	75 (UL) / 5 (CSA VDE)	100	3	370	✓		15-008993	15-008953
25	75 (UL) / 5 (CSA VDE)						15-009003	15-008963
09	75 (UL) / 5 (CSA VDE)						15-009063	15-009023
15	75 (UL) / 5 (CSA VDE)	100	3	820	✓		15-009073	15-009033
25	75 (UL) / 5 (CSA VDE)						15-009083	15-009043
09	75 (UL) / 5 (CSA VDE)						15-009143	15-009103
15	75 (UL) / 5 (CSA VDE)	100	3	1200	✓		15-009153	15-009113
25	75 (UL) / 5 (CSA VDE)						15-009163	15-009123
09	75 (UL) / 5 (CSA VDE)						15-009463	15-009423
15	75 (UL) / 5 (CSA VDE)	100	3	370		✓	15-009473	15-009433
25	75 (UL) / 5 (CSA VDE)						15-009483	15-009443
09	75 (UL) / 5 (CSA VDE)						15-009543	15-009503
15	75 (UL) / 5 (CSA VDE)	100	3	820		✓	15-009553	15-009513
25	75 (UL) / 5 (CSA VDE)						15-009563	15-009523
09	75 (UL) / 5 (CSA VDE)						15-009623	15-009583
15	75 (UL) / 5 (CSA VDE)	100	3	1200		✓	15-009633	15-009593
25	75 (UL) / 5 (CSA VDE)						15-009643	15-009603

IP67 FILTER D-SUB CONNECTORS
CONEC SlimCon, C-Filter, Standard

Solder pin, straight
 Precision machined contacts

Clip for PCB 1.6 mm, 4-40 UNC threaded insert



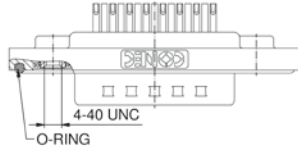
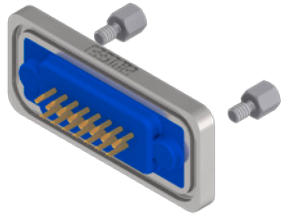
One-piece zinc die-cast nickel plated shell
 EMC Gasket or Silicone Gasket
 Quality class 3 (A) = 50 mating cycles
 Stainless steel hex bolts are supplied loose
 On request:
 • Quality class 1 (C) = 500 mating cycles
 • Gaskets also available separately

No. of poles	Current rating [A]	Working voltage [V]	Quality class	Capacitance [pF]	EMC gasket	Silicone gasket	Part No. Socket contact	Part No. Plug contact
09	75 (UL) / 5 (CSA VDE)						15-009223	15-009183
15	75 (UL) / 5 (CSA VDE)	100	3	370	✓		15-009233	15-009193
25	75 (UL) / 5 (CSA VDE)						15-009243	15-009203
09	75 (UL) / 5 (CSA VDE)						15-009303	15-009263
15	75 (UL) / 5 (CSA VDE)	100	3	820	✓		15-009313	15-009273
25	75 (UL) / 5 (CSA VDE)						15-009323	15-009283
09	75 (UL) / 5 (CSA VDE)						15-009383	15-009343
15	75 (UL) / 5 (CSA VDE)	100	3	1200	✓		15-009393	15-009353
25	75 (UL) / 5 (CSA VDE)						15-009403	15-009363
09	75 (UL) / 5 (CSA VDE)						15-009703	15-009663
15	75 (UL) / 5 (CSA VDE)	100	3	370		✓	15-009713	15-009673
25	75 (UL) / 5 (CSA VDE)						15-009723	15-009683
09	75 (UL) / 5 (CSA VDE)						15-009783	15-009743
15	75 (UL) / 5 (CSA VDE)	100	3	820		✓	15-009793	15-009753
25	75 (UL) / 5 (CSA VDE)						15-009803	15-009763
09	75 (UL) / 5 (CSA VDE)						15-009863	15-009823
15	75 (UL) / 5 (CSA VDE)	100	3	1200	✓		15-009873	15-009833
25	75 (UL) / 5 (CSA VDE)						15-009883	15-009843

IP67 FILTER D-SUB CONNECTORS
Plug connector, C-Filter, Standard

Solder cup
Precision machined contacts, AWG 26

4-40 UNC threaded insert



Shell: Brass tin plated
 Nickel plated die-cast frame
 Quality class 3 (A) = 50 mating cycles
 On request:
 • Quality class 1 (C) = 500 mating cycles
 • M3 thread

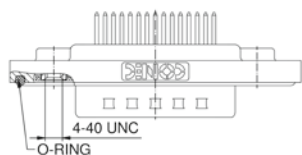
No. of poles	Current rating [A]	Working voltage [V]	UL-File	Quality class	Capacitance [pF]	Part No.
09	75 (UL) / 5 (CSA VDE)	100	E202784	3	370	6STF09PAM03B30X
15						6STF15PAM03B30X
25						6STF25PAM03B30X
37						6STF37PAM03B30X
50						6STF50PAM03B30X
09	75 (UL) / 5 (CSA VDE)	100	E202784	3	830	6STF09PAM04B30X
15						6STF15PAM04B30X
25						6STF25PAM04B30X
37						6STF37PAM04B30X
50						6STF50PAM04B30X
09	75 (UL) / 5 (CSA VDE)	100	E202784	3	1300	6STF09PAM05B30X
15						6STF15PAM05B30X
25						6STF25PAM05B30X
37						6STF37PAM05B30X
50						6STF50PAM05B30X

IP67 FILTER D-SUB CONNECTORS
Plug connector, C-Filter, Standard

Solder pin, straight
Precision machined contacts

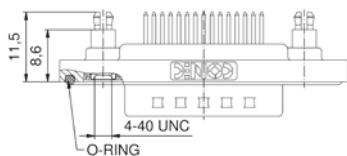
Shell: Brass tin plated
Nickel plated die-cast frame
Quality class 3 (A) = 50 mating cycles
On request:
• Quality class 1 (C) = 500 mating cycles
• M3 thread

4-40 UNC threaded insert



No. of poles	Current rating [A]	Working voltage [V]	UL-File	Quality class	Capacitance [pF]	Part No.
09	75 (UI) / 5 (CSA VDE)	100	E202784	3	370	6STF09PAR03B30X
15						6STF15PAR03B30X
25						6STF25PAR03B30X
37						6STF37PAR03B30X
50						6STF50PAR03B30X
09	75 (UI) / 5 (CSA VDE)	100	E202784	3	830	6STF09PAR04B30X
15						6STF15PAR04B30X
25						6STF25PAR04B30X
37						6STF37PAR04B30X
50						6STF50PAR04B30X
09	75 (UI) / 5 (CSA VDE)	100	E202784	3	1300	6STF09PAR05B30X
15						6STF15PAR05B30X
25						6STF25PAR05B30X
37						6STF37PAR05B30X
50						6STF50PAR05B30X

4-40 UNC front, threaded rear spacer clip for PCB 1.6 mm



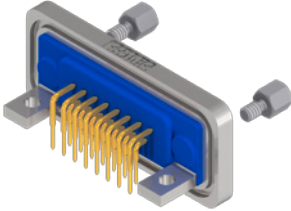
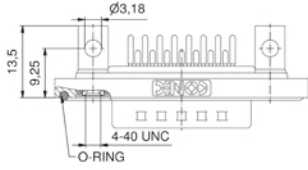
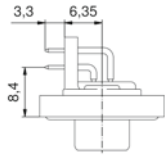
09	75 (UI) / 5 (CSA VDE)	100	E202784	3	370	6STF09PAR03E20X
15						6STF15PAR03E20X
25						6STF25PAR03E20X
37						6STF37PAR03E20X
50						6STF50PAR03E20X
09	75 (UI) / 5 (CSA VDE)	100	E202784	3	830	6STF09PAR04E20X
15						6STF15PAR04E20X
25						6STF25PAR04E20X
37						6STF37PAR04E20X
50						6STF50PAR04E20X
09	75 (UI) / 5 (CSA VDE)	100	E202784	3	1300	6STF09PAR05E20X
15						6STF15PAR05E20X
25						6STF25PAR05E20X
37						6STF37PAR05E20X
50						6STF50PAR05E20X

IP67 FILTER D-SUB CONNECTORS
Plug connector, C-Filter, Standard

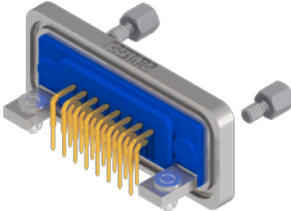
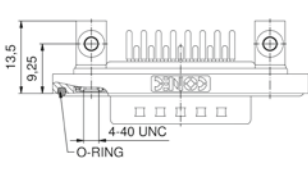
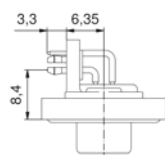
Solder pin angled, .331"/8.4 mm
 Precision machined contacts, metal bracket

Shell: Brass tin plated
 Nickel plated die-cast frame
 Quality class 3 (A) = 50 mating cycles
 On request:
 • Quality class 1 (C) = 500 mating cycles
 • M3 thread

4-40 UNC threaded insert

		No. of poles	Current rating [A]	Working voltage [V]	UL-File	Quality class	Capacitance [pF]	Part No.
  	09	75 (UI) / 5 (CSA, VDE)	100	E202784	3	370	6STF09PAT03S20X	
	15						6STF15PAT03S20X	
	25						6STF25PAT03S20X	
	37						6STF37PAT03S20X	
	09	75 (UI) / 5 (CSA, VDE)	100	E202784	3	830	6STF09PAT04S20X	
	15						6STF15PAT04S20X	
	25						6STF25PAT04S20X	
	37						6STF37PAT04S20X	
	09	75 (UI) / 5 (CSA, VDE)	100	E202784	3	1300	6STF09PAT05S20X	
	15						6STF15PAT05S20X	
	25						6STF25PAT05S20X	
	37						6STF37PAT05S20X	

Clip for PCB 1.6 mm, 4-40 UNC threaded insert

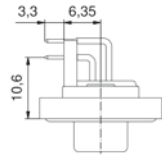
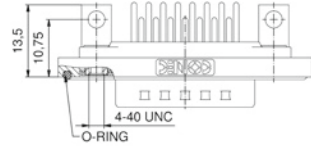
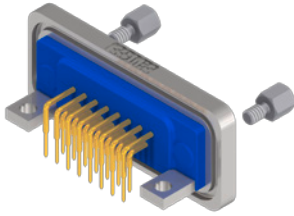
  	09	75 (UI) / 5 (CSA, VDE)	100	E202784	3	370	6STF09PAT03S40X
	15						6STF15PAT03S40X
	25						6STF25PAT03S40X
	37						6STF37PAT03S40X
	09	75 (UI) / 5 (CSA, VDE)	100	E202784	3	830	6STF09PAT04S40X
	15						6STF15PAT04S40X
	25						6STF25PAT04S40X
	37						6STF37PAT04S40X
	09	75 (UI) / 5 (CSA, VDE)	100	E202784	3	1300	6STF09PAT05S40X
	15						6STF15PAT05S40X
	25						6STF25PAT05S40X
	37						6STF37PAT05S40X

IP67 FILTER D-SUB CONNECTORS
Plug connector, C-Filter, Standard

Solder pin angled, .417"/10.6 mm
 Precision machined contacts, metal bracket

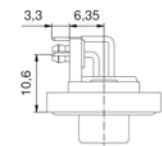
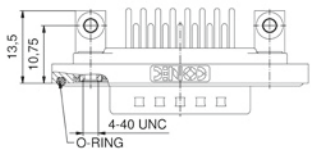
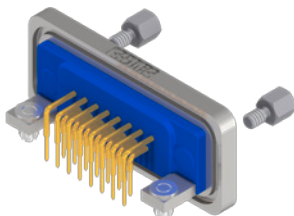
Shell: Brass tin plated
 Nickel plated die-cast frame
 Quality class 3 (A) = 50 mating cycles
 On request:
 • Quality class 1 (C) = 500 mating cycles
 • M3 thread

4-40 UNC threaded insert



No. of poles	Current rating [A]	Working voltage [V]	UL-File	Quality class	Capacitance [pF]	Part No.
09	75 (UI) / 5 (CSA VDE)	100	E202784	3	370	6STF09PAU03R20X
15						6STF15PAU03R20X
25						6STF25PAU03R20X
37						6STF37PAU03R20X
50						6STF50PAU03R20X
09	75 (UI) / 5 (CSA VDE)	100	E202784	3	830	6STF09PAU04R20X
15						6STF15PAU04R20X
25						6STF25PAU04R20X
37						6STF37PAU04R20X
50						6STF50PAU04R20X
09	75 (UI) / 5 (CSA VDE)	100	E202784	3	1300	6STF09PAU05R20X
15						6STF15PAU05R20X
25						6STF25PAU05R20X
37						6STF37PAU05R20X
50						6STF50PAU05R20X

Clip for PCB 1.6 mm, 4-40 UNC threaded insert



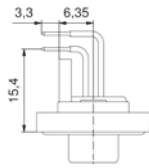
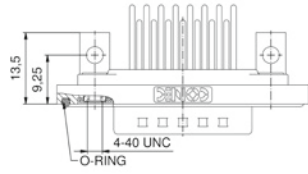
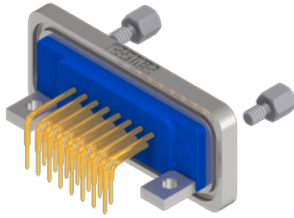
09	75 (UI) / 5 (CSA VDE)	100	E202784	3	370	6STF09PAU03R40X
15						6STF15PAU03R40X
25						6STF25PAU03R40X
37						6STF37PAU03R40X
50						6STF50PAU03R40X
09	75 (UI) / 5 (CSA VDE)	100	E202784	3	830	6STF09PAU04R40X
15						6STF15PAU04R40X
25						6STF25PAU04R40X
37						6STF37PAU04R40X
50						6STF50PAU04R40X
09	75 (UI) / 5 (CSA VDE)	100	E202784	3	1300	6STF09PAU05R40X
15						6STF15PAU05R40X
25						6STF25PAU05R40X
37						6STF37PAU05R40X
50						6STF50PAU05R40X

IP67 FILTER D-SUB CONNECTORS
Plug connector, C-Filter, Standard

Solder pin angled, .606" / 15.4 mm
 Precision machined contacts, metal bracket

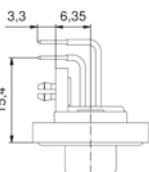
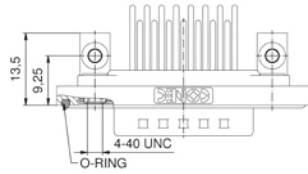
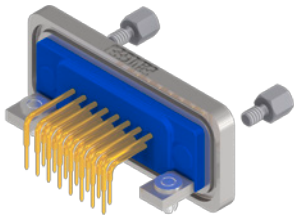
Shell: Brass tin plated
 Nickel plated die-cast frame
 Quality class 3 (A) = 50 mating cycles
 On request:
 • Quality class 1 (C) = 500 mating cycles
 • M3 thread

4-40 UNC threaded insert



No. of poles	Current rating [A]	Working voltage [V]	UL-File	Quality class	Capacitance [pF]	Part No.
09	75 (UI) / 5 (CSA VDE)	100	E202784	3	370	6STF09PAZ03S20X
15						6STF15PAZ03S20X
25						6STF25PAZ03S20X
37						6STF37PAZ03S20X
09	75 (UI) / 5 (CSA VDE)	100	E202784	3	830	6STF09PAZ04S20X
15						6STF15PAZ04S20X
25						6STF25PAZ04S20X
37						6STF37PAZ04S20X
09	75 (UI) / 5 (CSA VDE)	100	E202784	3	1300	6STF09PAZ05S20X
15						6STF15PAZ05S20X
25						6STF25PAZ05S20X
37						6STF37PAZ05S20X

Clip for PCB 1.6 mm, 4-40 UNC threaded insert

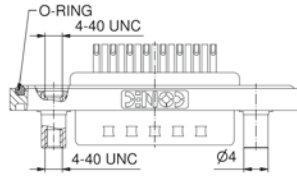
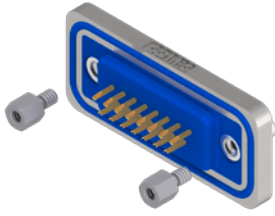


09	75 (UI) / 5 (CSA VDE)	100	E202784	3	370	6STF09PAZ03S40X
15						6STF15PAZ03S40X
25						6STF25PAZ03S40X
37						6STF37PAZ03S40X
09	75 (UI) / 5 (CSA VDE)	100	E202784	3	830	6STF09PAZ04S40X
15						6STF15PAZ04S40X
25						6STF25PAZ04S40X
37						6STF37PAZ04S40X
09	75 (UI) / 5 (CSA VDE)	100	E202784	3	1300	6STF09PAZ05S40X
15						6STF15PAZ05S40X
25						6STF25PAZ05S40X
37						6STF37PAZ05S40X

IP67 FILTER D-SUB CONNECTORS
 Plug connector, C-Filter, Standard, front panel mounting

Solder cup
 Precision machined contacts, AWG 26

4-40 UNC front spacer



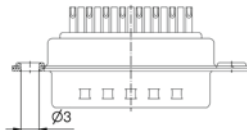
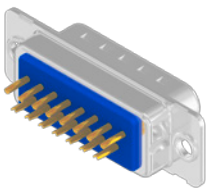
Shell: Brass tin plated
 Nickel plated die-cast frame
 Quality class 3 (A) = 50 mating cycles
 On request:
 • Quality class 1 (C) = 500 mating cycles
 • M3 thread

No. of poles	Current rating [A]	Working voltage [V]	UL-File	Quality class	Capacitance [pF]	Part No.
09	75 (UL) / 5 (CSA VDE)	100	E202784	3	370	6STF09PAM03B50X
15						6STF15PAM03B50X
25						6STF25PAM03B50X
37						6STF37PAM03B50X
50						6STF50PAM03B50X
09	75 (UL) / 5 (CSA VDE)	100	E202784	3	830	6STF09PAM04B50X
15						6STF15PAM04B50X
25						6STF25PAM04B50X
37						6STF37PAM04B50X
50						6STF50PAM04B50X
09	75 (UL) / 5 (CSA VDE)	100	E202784	3	1300	6STF09PAM05B50X
15						6STF15PAM05B50X
25						6STF25PAM05B50X
37						6STF37PAM05B50X
50						6STF50PAM05B50X

IP67 FILTER D-SUB CONNECTORS
 Plug connector, C-Filter, Standard

Solder cup p,recision machined contacts
 Hood Assembly, AWG 26

Through-hole Ø 3 mm



Shell: Brass tin plated
 Quality class 3 (A) = 50 mating cycles
 On request:
 • Quality class 1 (C) = 500 mating cycles

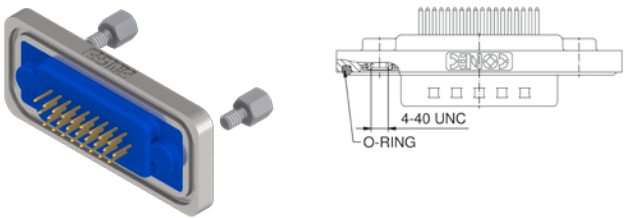
No. of poles	Current rating [A]	Working voltage [V]	UL-File	Quality class	Capacitance [pF]	Part No.
09	75 (UL) / 5 (CSA VDE)	100	E202784	3	370	4STF09PAM03A10X
15						4STF15PAM03A10X
25						4STF25PAM03A10X
37						4STF37PAM03A10X
50						4STF50PAM03A10X
09	75 (UL) / 5 (CSA VDE)	100	E202784	3	830	4STF09PAM04A10X
15						4STF15PAM04A10X
25						4STF25PAM04A10X
37						4STF37PAM04A10X
50						4STF50PAM04A10X
09	75 (UL) / 5 (CSA VDE)	100	E202784	3	1300	4STF09PAM05A10X
15						4STF15PAM05A10X
25						4STF25PAM05A10X
37						4STF37PAM05A10X
50						4STF50PAM05A10X

IP67 FILTER D-SUB CONNECTORS
Plug connector C-Filter High Density

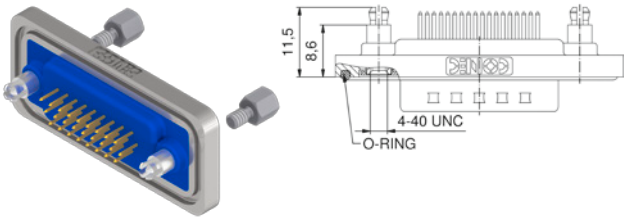
Solder pin straight
 Precision machined contact

Shell: Brass tin plated
 Nickel plated die-cast frame
 Quality class 3 (A) = 50 mating cycles
 On request:
 • Quality class 1 (C) = 500 mating cycles
 • M3 thread

4-40 UNC threaded insert

		No. of poles	Current rating [A]	Working voltage [V]	UL-File	Quality class	Capacitance [pF]	Part No.
		15	3 (UI) / 2.5 (CSA)	100	E202784	3	370	6HDF15PAR03B30X
26	6HDF26PAR03B30X							
44	6HDF44PAR03B30X							
62	6HDF62PAR03B30X							
15	3 (UI) / 2.5 (CSA)	100	E202784	3	830	6HDF15PAR04B30X		
26						6HDF26PAR04B30X		
44						6HDF44PAR04B30X		
62						6HDF62PAR04B30X		

4-40 UNC front, threaded rear spacer clip for PCB 1.6 mm

		No. of poles	Current rating [A]	Working voltage [V]	UL-File	Quality class	Capacitance [pF]	Part No.
		15	3 (UI) / 2.5 (CSA)	100	E202784	3	370	6HDF15PAR03E20X
26	6HDF26PAR03E20X							
44	6HDF44PAR03E20X							
62	6HDF62PAR03E20X							
15	3 (UI) / 2.5 (CSA)	100	E202784	3	830	6HDF15PAR04E20X		
26						6HDF26PAR04E20X		
44						6HDF44PAR04E20X		
62						6HDF62PAR04E20X		

IP67 FILTER D-SUB CONNECTORS
Plug connector C-Filter High Density

Solder pin angled .362"/9.2 mm
 Precision machined contacts, metal bracket

Shell: Brass tin plated
 Nickel plated die-cast frame
 Quality class 3 (A) = 50 mating cycles
 On request:
 • Quality class 1 (C) = 500 mating cycles
 • M3 thread

4-40 UNC threaded insert

		No. of poles	Current rating [A]	Working voltage [V]	UL-File	Quality class	Capacitance [pF]	Part No.
	15	3 (UI) / 2.5 (CSA)	100	E202784	3	370	6HDF15PAY03R20X	
	26						6HDF26PAY03R20X	
	44						6HDF44PAY03R20X	
	62						6HDF62PAY03R20X	
	15	3 (UI) / 2.5 (CSA)	100	E202784	3	830	6HDF15PAY04R20X	
	26						6HDF26PAY04R20X	
	44						6HDF44PAY04R20X	
	62						6HDF62PAY04R20X	

Clip for PCB 1.6 mm, 4-40 UNC threaded insert

	15	3 (UI) / 2.5 (CSA)	100	E202784	3	370	6HDF15PAY03R40X
	26						6HDF26PAY03R40X
	44						6HDF44PAY03R40X
	62						6HDF62PAY03R40X
	15	3 (UI) / 2.5 (CSA)	100	E202784	3	830	6HDF15PAY04R40X
	26						6HDF26PAY04R40X
	44						6HDF44PAY04R40X
	62						6HDF62PAY04R40X