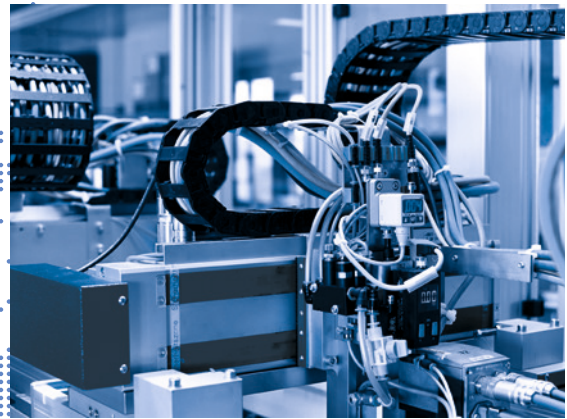
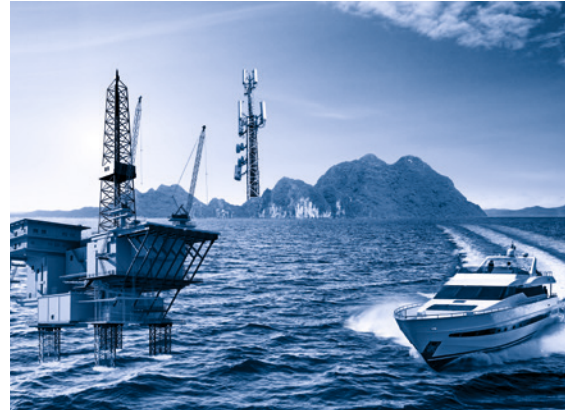


SECTION 6

IP67 D-SUB CONNECTORS





IP67 D-SUB CONNECTORS

Part Number Creator

6 S T D 0 9 S A M 9 9 B 3 O X

Product Line

- 6 = Shell brass tin plated with die-cast frame
 - 4 = Shell brass tin plated with plastic frame or without frame
 - 8* = Shell stainless steel with or without die-cast frame
 - 8* = Shell stainless steel with plastic frame
- *on request

Variations

- STD = D-SUB-Standard
- HDD = D-SUB-High Density

Position for STD

- 09 = 9-pos.
- 15 = 15-pos.
- 25 = 25-pos.
- 37 = 37-pos.
- 50 = 50-pos.

Position for HDD

- 15 = 15-pos.
- 26 = 26-pos.
- 44 = 44-pos.
- 62 = 62-pos.
- 78 = 78-pos.

Contact type

- P = Plug connector
- S = Socket connector
- A = Adapter

Quality class for contacts

- A = Quality class 3 = 50 mating cycles
- B = Quality class 2 = 200 mating cycles
- C = Quality class 1 = 500 mating cycles

Termination

- M = Solder cup 10 A
- R = Solder pin, straight
- T = Solder pin, angled, .189"/ 4.80 mm
- U = Solder pin, angled, .189"/ 7.00 mm
- Z = Solder pin, angled, .189"/11.80 mm
- Y = Solder pin, angled, .189"/ 5.60 mm (high density design only)
- A = Adapter

Capacitance

- 99 = Without filter for STD and HDD

Mounting style

- A1 = Riveted for wire assembly shell without sealing frame
- B3 = 4-40 UNC threaded insert
- B5 = 4-40 UNC front spacer
- B7 = 4-40 UNC front spacer and rear mounting stud
- B9 = 4-40 UNC front spacer for adapter
- E2 = 4-40 UNC Threaded rear spacer with PCB clip, PCB 1.60 mm
- S2 = Metal bracket, 4-40 UNC threaded insert
- S4 = Metal bracket, 4-40 UNC threaded insert and PCB clip
- R2 = Metal bracket, 4-40 UNC threaded insert
- R4 = Metal bracket, 4-40 UNC threaded insert and PCB clip

- OX = Standard

IP67 COMBINATION D-SUB CONNECTORS

Product specification

Basic material	D-SUB			D-SUB High Density		
	SlimCon	Solid Body	Standard	SlimCon	Solid Body	Standard
Number of poles	9 - 25 pos.	9 - 50 pos.		15 - 44 pos.	15 - 78 pos.	
Contact	Copper alloy					
Contact plating	Gold over nickel					
Insulator	PBT GF UL 94 V-0					
One-piece shell Zinc die-cast nickel plated	✓	✓		✓	✓	
Shell Brass tin plated (Stainless steel on request)			✓			✓
Technical data						
Test voltage	1000 V, 50 Hz, for 1 minute					
Working voltage	125 V AC/DC depending on isolation coordination refer to DIN VDE 0110 / IEC 664-1			60 V AC/DC		
Current rating	7.5 A (UL) / 5 A (CSA, VDE)			3 A (UL) / 2.5 A (CSA, VDE)		
Contact resistance	max. 10 mΩ prior to stressing ΔR max. 10 mΩ after stressing per IEC 60807-2					
Insulation resistance	≥ 5 GΩ					
Clearance and creepage distance	Contact - Contact ≥ 1.0 mm / 0.04" Contact - earth ≥ 1.2 mm / 0.047"			≥ 0.6 mm / 0.024"		
Operating temperature	-40 °C to +105 °C		-25 °C to +105 °C	-40 °C to +105 °C		-25 °C to +105 °C
Mounting style Rear panel mounting/ Panel thickness	min. 0.8 mm to 1.3 mm	min. 1 mm to 1.6 mm		min. 0.8 mm to 1.3 mm	min. 1 mm to 1.6 mm	
Mounting style Front panel mounting			✓		✓	
Mating and unmating forces	9 pos. ≤ 30 N 15 pos. ≤ 50 N 25 pos. ≤ 30 N	9 pos. ≤ 30 N 15 pos. ≤ 50 N 25 pos. ≤ 83 N 37 pos. ≤ 123 N 50 pos. ≤ 167 N		15 pos. ≤ 50 N 26 pos. ≤ 84 N 44 pos. ≤ 120 N	15 pos. ≤ 50 N 26 pos. ≤ 84 N 44 pos. ≤ 120 N 62 pos. ≤ 170 N 78 pos. ≤ 200 N	
Quality class	A = Quality class 3 = 50 mating cycles B = Quality class 2 = 200 mating cycles C = Quality class 1 = 500 mating cycles					
Recommended wavesolder parameters	Preheating		Solder terminal dipping parameters			
	max. temperature	duration (max.)	max. Solder bath temperature		max. terminal immersion time	
IP67 D-SUB CONEC SlimCon and Solid Body	150 °C	180 s	265 °C		8 s	
IP67 D-SUB Standard	120 °C	120 s	240 °C		5 s	

Technical specifications are subject to change without notice.

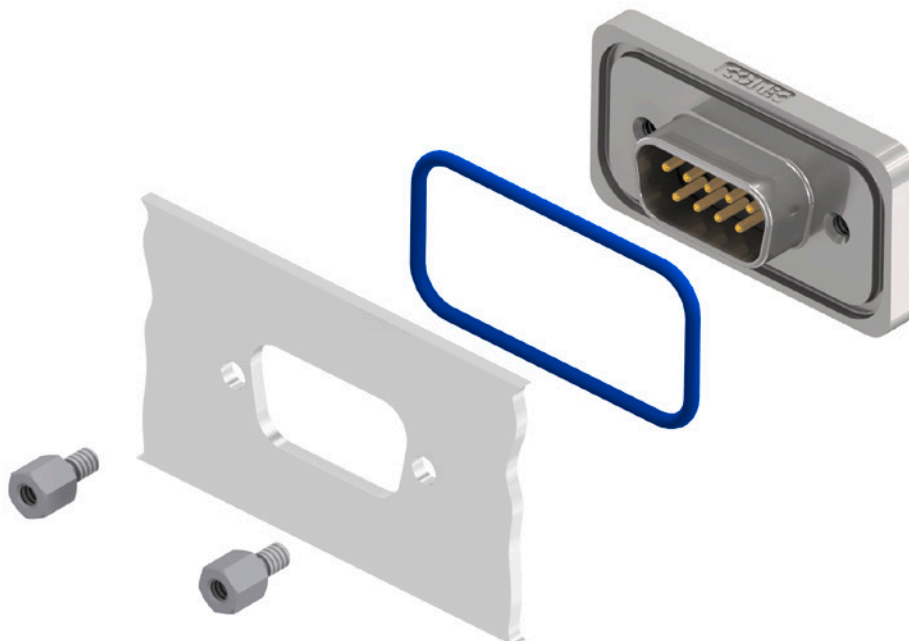
IP67 D-SUB CONNECTORS

Panel mounting

Front panel mounting



Back panel mounting

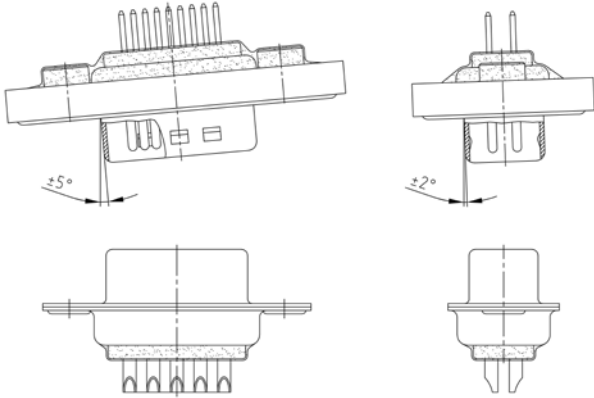


The hex bolts illustrated here (4-40 UNC or M3 threads) are included in the delivery complement of every connector with a sealing frame. The length of this spacer has been selected to accommodate a panel thickness of .063"/1.6 mm (standard & solid body)/.051"/1.3 mm (CONEC SlimCon) such that it does not extend beyond the plug-in height. Material: stainless steel.

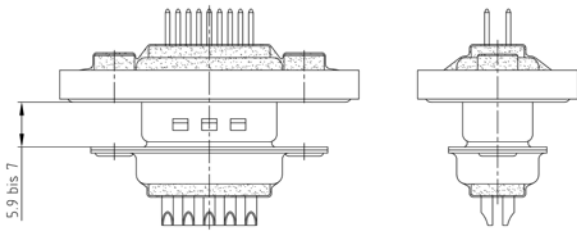
IP67 D-SUB CONNECTORS

Mating conditions

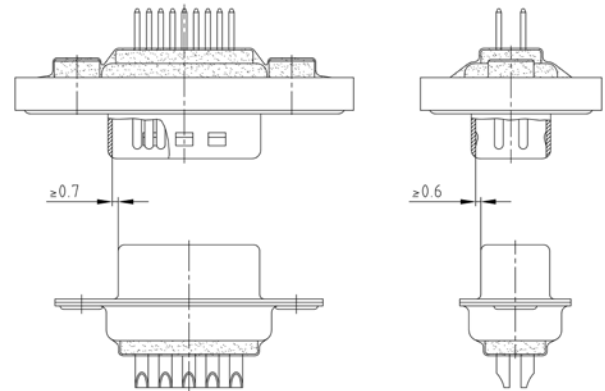
Max. tilt angle for connector mating



Range for safe contact

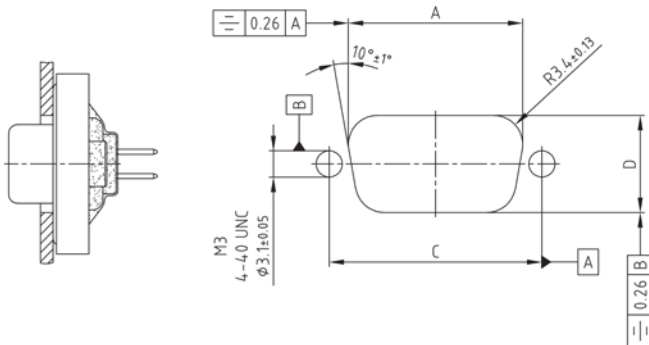


Lock-in range

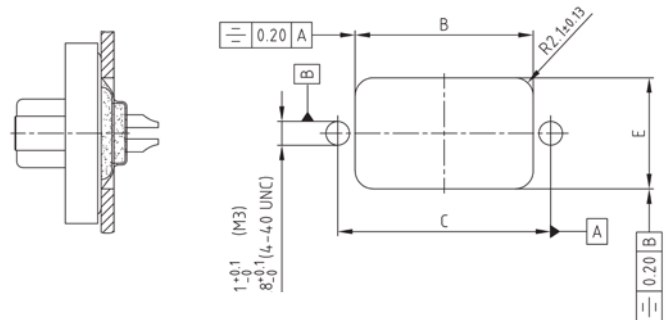


Panel cut-out

Back panel mounting



Front panel mounting



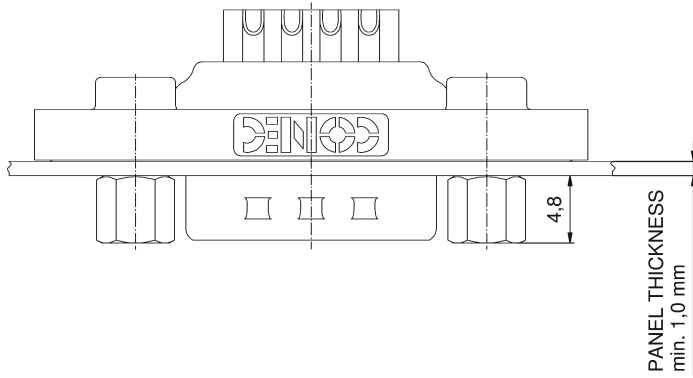
Shell size	A ±0.1	B ±0.1	C ±0.1	D ±0.1	E ±0.1
1	20.50	20.90	25.00	11.40	13.00
2	28.80	29.20	33.30	11.40	13.00
3	42.50	42.90	47.04	11.40	13.00
4	59.10	59.40	63.50	11.40	13.00
5	56.30	57.00	61.10	14.10	15.80

Technical specifications are subject to change without notice.

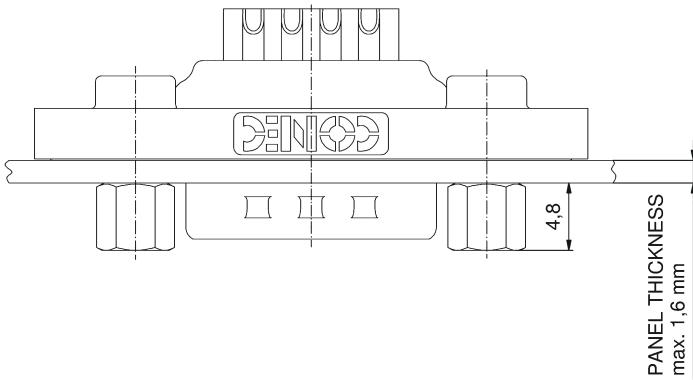
IP67 D-SUB CONNECTORS

Assembly for series Solid Body and Standard Rear Panel Mounting

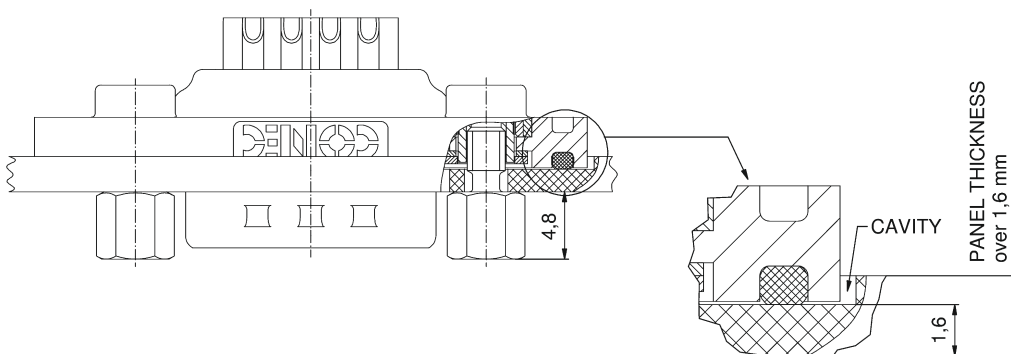
Panel thickness min. 1.0 mm



Panel thickness max. 1.6 mm



Panel thickness over 1.6 mm

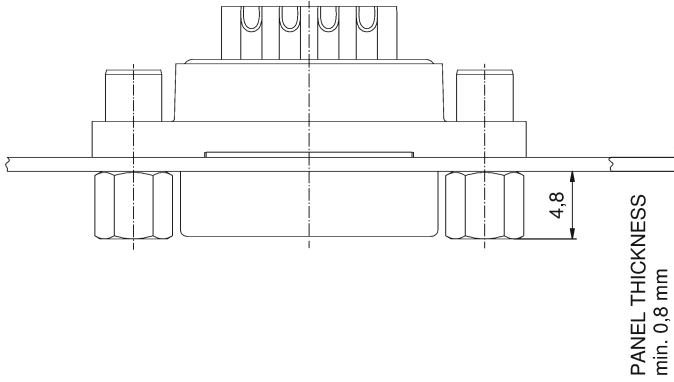


Technical specifications are subject to change without notice.

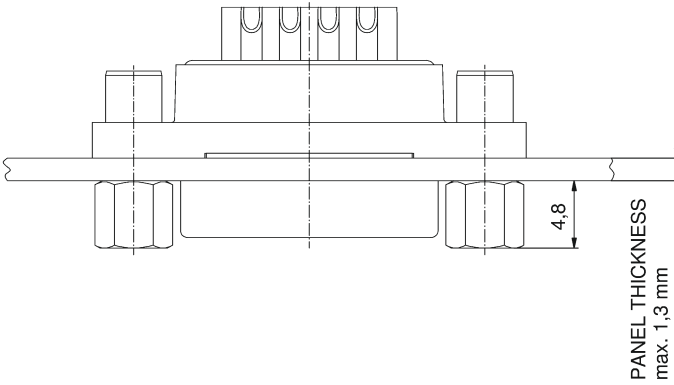
IP67 D-SUB CONNECTORS

Assembly for series CONEC SlimCon Rear Panel Mounting

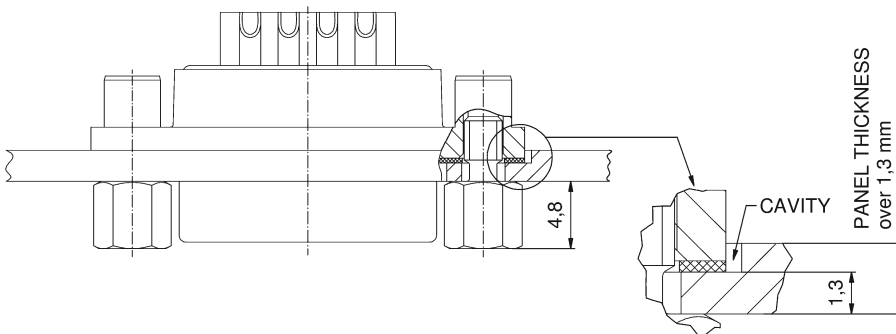
Panel thickness min. 0.8 mm



Panel thickness max. 1.3 mm



Panel thickness over 1.3 mm



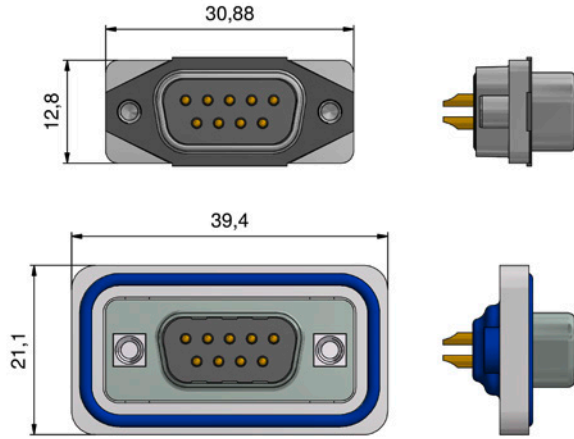
Technical specifications are subject to change without notice.

IP67 D-SUB CONNECTORS

Size comparison

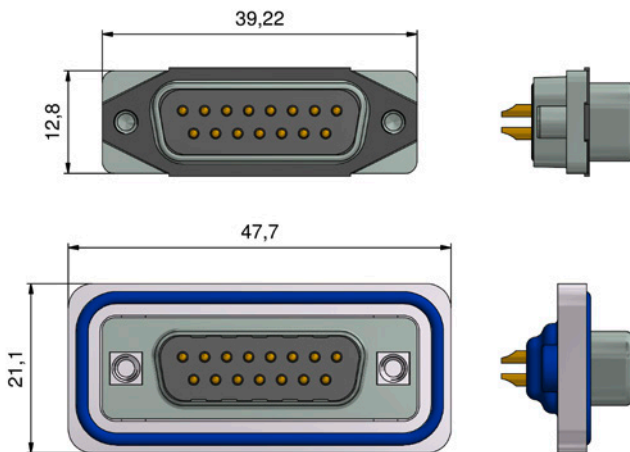
Series Standard/Solid Body versus series CONEC SlimCon

Size 1



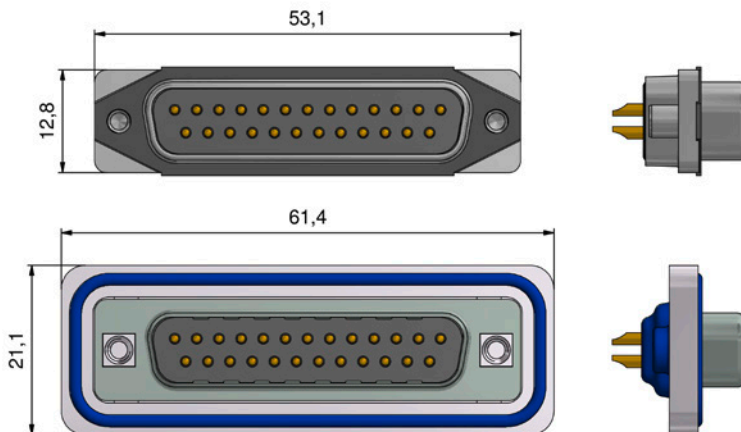
IP67 D-SUB CONEC SlimCon	IP67 D-SUB Standard/ Solid Body	Space-saving	Reduction of mounting space
30.88 mm	39.4 mm	8.3 mm / 13.5 %	52 %
12.8 mm	21.1 mm	8.3 mm / 39 %	

Size 2



IP67 D-SUB CONEC SlimCon	IP67 D-SUB Standard/ Solid Body	Space-saving	Reduction of mounting space
39.22 mm	47.7 mm	8.3 mm / 13.5 %	50 %
12.8 mm	21.1 mm	8.3 mm / 39 %	

Size 3



IP67 D-SUB CONEC SlimCon	IP67 D-SUB Standard/ Solid Body	Space-saving	Reduction of mounting space
53.1 mm	61.4 mm	8.3 mm / 13.5 %	48 %
12.8 mm	21.1 mm	8.3 mm / 39 %	

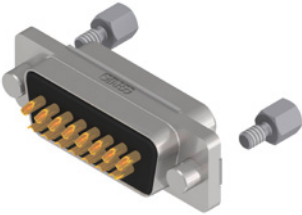
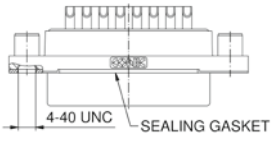
Technical specifications are subject to change without notice.

IP67 D-SUB CONNECTORS
CONEC SlimCon


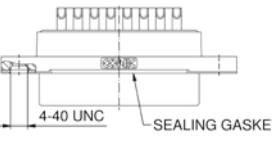
Solder cup
Precision machined contacts, AWG 20

One-piece shell: zinc die-cast nickel plated
Quality class 3 (A) = 50 mating cycles
On request:
• Quality class 1 (C) = 500 mating cycles

4-40 UNC threaded insert

 	No. of poles	Current rating [A]	Working voltage [V]	Quality class	Part No. Socket contact	Part No. Plug contact
	09	7.5 (UL) / 5 (CSA, VDE)	125	3	15-006293	15-006243
	15				15-006303	15-006253
	25				15-006313	15-006263

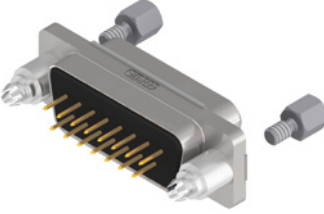
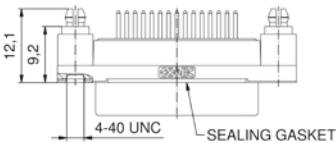
4-40 UNC threaded insert (for cable assembly and overmould)

 	No. of poles	Current rating [A]	Working voltage [V]	Quality class	Part No. Socket contact	Part No. Plug contact
	09	7.5 (UL) / 5 (CSA, VDE)	125	3	15-006393	15-006343
	15				15-006403	15-006353
	25				15-006413	15-006363

Solder pin, straight
Precision machined contacts

4-40 UNC threaded rear spacer clip for PCB 1.6 mm

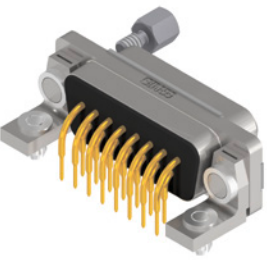
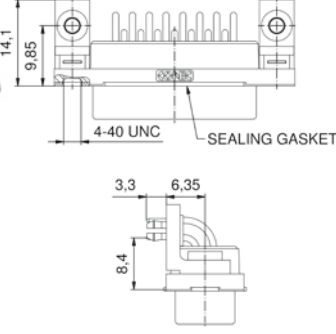
Part No. Socket contact Part No. Plug contact

 	No. of poles	Current rating [A]	Working voltage [V]	Quality class	Part No. Socket contact	Part No. Plug contact
	09	7.5 (UL) / 5 (CSA, VDE)	125	3	15-006493	15-006443
	15				15-006503	15-006453
	25				15-006513	15-006463

Solder pin, angled, .331"/8.4 mm
Precision machined contacts, metal bracket

Clip for PCB 1.6 mm, 4-40 UNC threaded insert


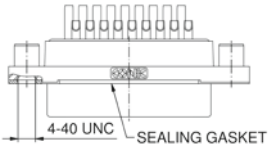
Part No. Socket contact Part No. Plug contact

 	No. of poles	Current rating [A]	Working voltage [V]	Quality class	Part No. Socket contact	Part No. Plug contact
	09	7.5 (UL) / 5 (CSA, VDE)	125	3	15-006593	15-006543
	15				15-006603	15-006553
	25				15-006613	15-006563


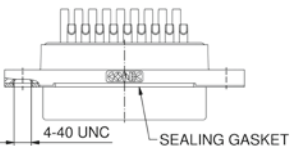
IP67 D-SUB HIGH DENSITY CONNECTORS
CONEC SlimCon

Solder cup
 Precision machined contacts, AWG 22

4-40 UNC threaded insert


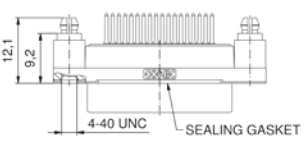
 	No. of poles	Current rating [A]	Working voltage [V]	Quality class	Part No. Socket contact	Part No. Plug contact
					Part No. Socket contact	Part No. Plug contact
	15	3 (UL, VDE) / 2.5 (CSA)	60	3	15-007853	15-007823
	26	3 (UL, VDE) / 2.5 (CSA)			15-007863	15-007833
	44	3 (UL, VDE) / 2.5 (CSA)			15-007873	15-007843

4-40 UNC threaded insert (for cable assembly and overmould)

 	No. of poles	Current rating [A]	Working voltage [V]	Quality class	Part No. Socket contact	Part No. Plug contact
					Part No. Socket contact	Part No. Plug contact
	15	3 (UL, VDE) / 2.5 (CSA)	60	3	15-007673	15-007703
	26	3 (UL, VDE) / 2.5 (CSA)			15-007683	15-007713
	44	3 (UL, VDE) / 2.5 (CSA)			15-007693	15-007723

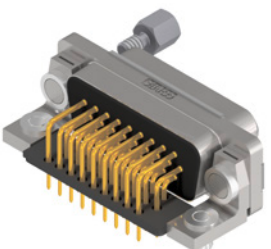
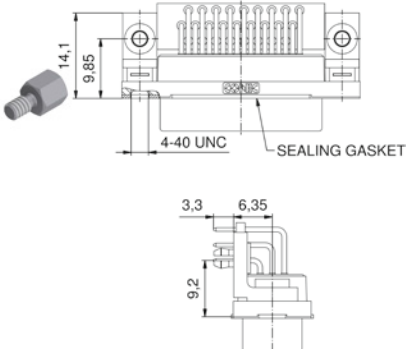
Solder pin, straight
 Precision machined contacts

4-40 UNC threaded rear spacer clip for PCB 1.6 mm

 	No. of poles	Current rating [A]	Working voltage [V]	Quality class	Part No. Socket contact	Part No. Plug contact
					Part No. Socket contact	Part No. Plug contact
	15	3 (UL, VDE) / 2.5 (CSA)	60	3	15-007553	15-007583
	26	3 (UL, VDE) / 2.5 (CSA)			15-007563	15-007593
	44	3 (UL, VDE) / 2.5 (CSA)			15-007573	15-007603

Solder pin, angled, .362" / 9.2 mm
 Precision machined contacts, metal bracket

Clip for PCB 1.6 mm, 4-40 UNC threaded insert

 	No. of poles	Current rating [A]	Working voltage [V]	Quality class	Part No. Socket contact	Part No. Plug contact
					Part No. Socket contact	Part No. Plug contact
	15	3 (UL, VDE) / 2.5 (CSA)	60	3	15-007613	15-007643
	26				15-007623	15-007653
	44				15-007633	15-007663

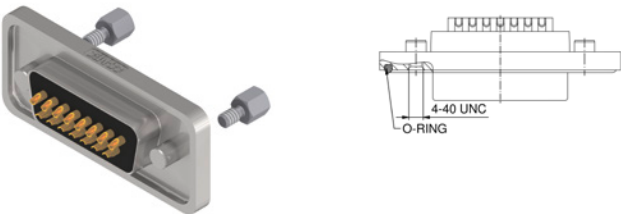
One-piece shell: zinc die-cast nickel plated
 Quality class 3 (A) = 50 mating cycles
 On request:
 • Quality class 1 (C) = 500 mating cycles

IP67 D-SUB CONNECTORS
Standard Solid Body

Solder cup
Precision machined contacts, AWG 20

4-40 UNC threaded insert

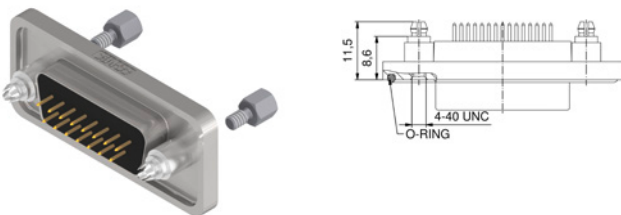
One-piece shell: zinc die-cast nickel plated
Quality class 3 (A) = 50 mating cycles
On request:
• Quality class 1 (C) = 500 mating cycles

	No. of poles	Current rating [A]	Working voltage [V]	Quality class	Part No. Socket contact	Part No. Plug contact
	09	7.5 (UL) / 5 (CSA, VDE)	125	3	15-000613	15-000573
	15				15-000623	15-000583
	25				15-000633	15-000593
	37				15-000643	15-000603
	50				15-002103	15-002093

Solder pin, straight
Precision machined contacts

4-40 UNC threaded rear spacer clip for PCB 1.6 mm

Part No. Socket contact Part No. Plug contact

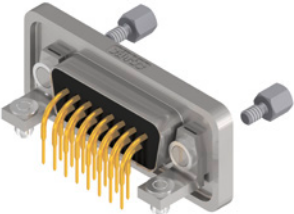
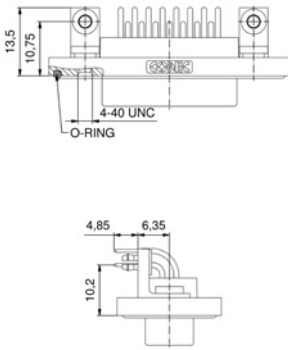
	No. of poles	Current rating [A]	Working voltage [V]	Quality class	Part No. Socket contact	Part No. Plug contact
	09	7.5 (UL) / 5 (CSA, VDE)	125	3	15-000453	15-000413
	15				15-000463	15-000423
	25				15-000473	15-000433
	37				15-000483	15-000443
	50				15-002063	15-002053

IP67 D-SUB CONNECTORS
Standard Solid Body

Solder pin, angled, .402" / 10.2 mm
Precision machined contacts, metal bracket

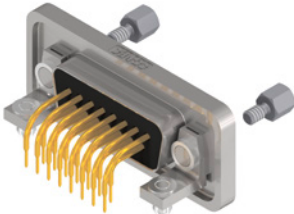
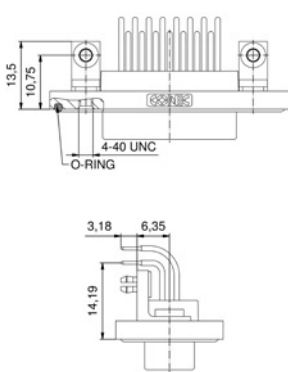
Clip for PCB 1.6 mm, 4-40 UNC threaded insert

One-piece shell: zinc die-cast nickel plated
Quality class 3 (A) = 50 mating cycles
On request:
• Quality class 1 (C) = 500 mating cycles

 	No. of poles	Current rating [A]	Working voltage [V]	Quality class	Part No. Socket contact	Part No. Plug contact
					Part No. Socket contact	Part No. Plug contact
	09	75 (UL) / 5 (CSA VDE)	125	3	15-000773	15-000733
	15				15-000783	15-000743
	25				15-000793	15-000753
	37				15-000803	15-000763
	50				15-002143	15-002133

Solder pin, angled, .590" / 14.19 mm
Precision machined contacts, metal bracket

Clip for PCB 1.6 mm, 4-40 UNC threaded insert

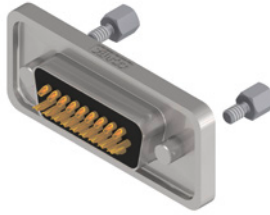
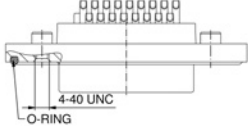
 	No. of poles	Current rating [A]	Working voltage [V]	Quality class	Part No. Socket contact	Part No. Plug contact
					Part No. Socket contact	Part No. Plug contact
	09	75 (UL) / 5 (CSA VDE)	125	3	15-000853	15-000813
	15				15-000863	15-000823
	25				15-000873	15-000833
	37				15-000883	15-000843
	50				15-002163	15-002153

IP67 D-SUB CONNECTORS
High Density Solid Body

Solder cup
Precision machined contacts, AWG 22

4-40 UNC threaded insert


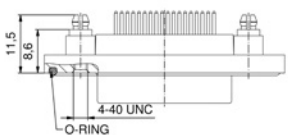
One-piece shell: zinc die-cast nickel plated
Quality class 3 (A) = 50 mating cycles
On request:
• Quality class 1 (C) = 500 mating cycles

 	No. of poles	Current rating [A]	Working voltage [V]	Quality class	Part No. Socket contact	Part No. Plug contact
					Part No. Socket contact	Part No. Plug contact
	15	3 (UL, VDE) / 2.5 (CSA)	60	3	15-000693	15-000653
	26				15-000703	15-000663
	44				15-000713	15-000673
	62				15-000723	15-000683
	78				15-002123	15-002113

IP67 D-SUB CONNECTORS
High Density Solid Body

Solder pin, straight
Precision machined contacts

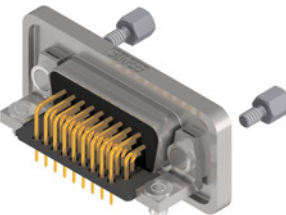
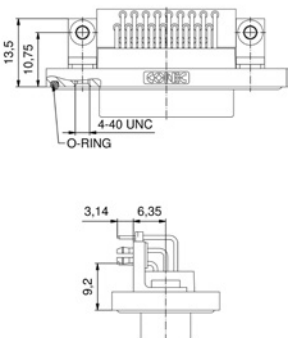
4-40 UNC threaded rear spacer clip for PCB 1.6 mm

 	No. of poles	Current rating [A]	Working voltage [V]	Quality class	Part No. Socket contact	Part No. Plug contact
					Part No. Socket contact	Part No. Plug contact
	15	3 (UL, VDE) / 2.5 (CSA)	60	3	15-000533	15-000493
	26				15-000543	15-000503
	44				15-000553	15-000513
	62				15-000563	15-000523
	78				15-002183	15-002073

One-piece shell: zinc die-cast nickel plated
Quality class 3 (A) = 50 mating cycles
On request:
• Quality class 1 (C) = 500 mating cycles

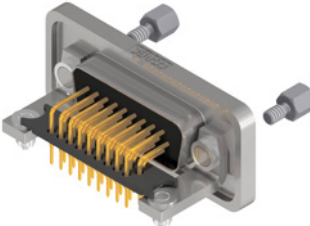
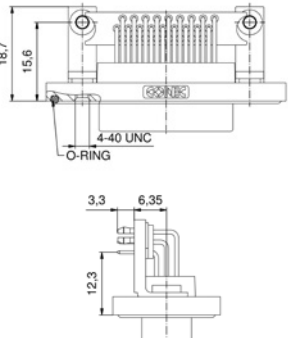
Solder pin, angled, .362"/9.2 mm
Precision machined contacts, metal bracket

Clip for PCB 1.6 mm, 4-40 UNC threaded insert

 	No. of poles	Current rating [A]	Working voltage [V]	Quality class	Part No. Socket contact	Part No. Plug contact
					Part No. Socket contact	Part No. Plug contact
	15	3 (UL, VDE) / 2.5 (CSA)	60	3	15-002243	15-002193
	26				15-002253	15-002203
	44				15-002263	15-002213
	62				15-002273	15-002223
	78				15-002283	15-002233

Solder pin, angled, .484"/12.3 mm
Precision machined contacts, metal bracket


Clip for PCB 1.6 mm, 4-40 UNC threaded insert

 	No. of poles	Current rating [A]	Working voltage [V]	Quality class	Part No. Socket contact	Part No. Plug contact
					Part No. Socket contact	Part No. Plug contact
	15	3 (UL, VDE) / 2.5 (CSA)	60	3	15-000933	15-000893
	26				15-000943	15-000903
	44				15-000953	15-000913
	62				15-000963	15-000923

IP67 D-SUB CONNECTORS Standard

Solder cup
Precision machined contacts, AWG 20

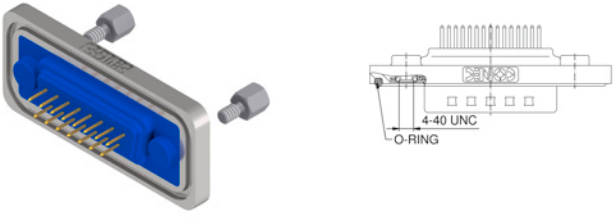
4-40 UNC threaded insert

	No. of poles	Current rating [A]	Working voltage [V]	UL-File	Quality class	Part No. Socket contact	Part No. Plug contact
						Part No. Socket contact	Part No. Plug contact
	09	7.5 (UL) / 5 (CSA VDE)	125	E202784	3	6STD09SAM99B30X	6STD09PAM99B30X
	15					6STD15SAM99B30X	6STD15PAM99B30X
	25					6STD25SAM99B30X	6STD25PAM99B30X
	37					6STD37SAM99B30X	6STD37PAM99B30X
	50					6STD50SAM99B30X	6STD50PAM99B30X

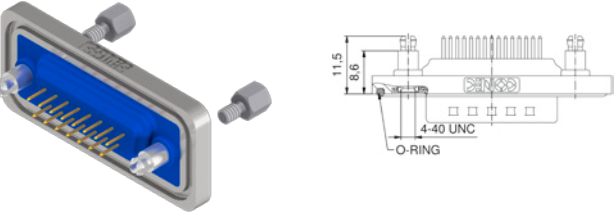
Shell: Brass tin plated
Quality class 3 (A) = 50 mating cycles
On request:
• Stainless steel
• Quality class 1 (C) = 500 mating cycles
• M3 thread

Solder pin, straight
Precision machined contacts

4-40 UNC threaded insert

	No. of poles	Current rating [A]	Working voltage [V]	UL-File	Quality class	Part No. Socket contact	Part No. Plug contact
						Part No. Socket contact	Part No. Plug contact
	09	7.5 (UL) / 5 (CSA VDE)	125	E202784	3	6STD09SAR99B30X	6STD09PAR99B30X
	15					6STD15SAR99B30X	6STD15PAR99B30X
	25					6STD25SAR99B30X	6STD25PAR99B30X
	37					6STD37SAR99B30X	6STD37PAR99B30X
	50					6STD50SAR99B30X	6STD50PAR99B30X

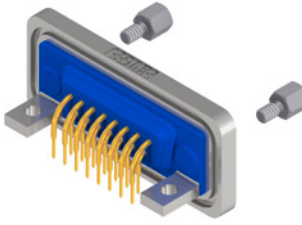
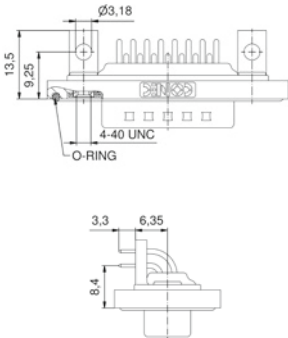
4-40 UNC threaded rear spacer clip for PCB 1.6 mm

	No. of poles	Current rating [A]	Working voltage [V]	UL-File	Quality class	Part No. Socket contact	Part No. Plug contact
						Part No. Socket contact	Part No. Plug contact
	09	7.5 (UL) / 5 (CSA VDE)	125	E202784	3	6STD09SAR99E20X	6STD09PAR99E20X
	15					6STD15SAR99E20X	6STD15PAR99E20X
	25					6STD25SAR99E20X	6STD25PAR99E20X
	37					6STD37SAR99E20X	6STD37PAR99E20X
	50					6STD50SAR99E20X	6STD50PAR99E20X

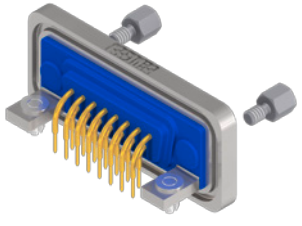
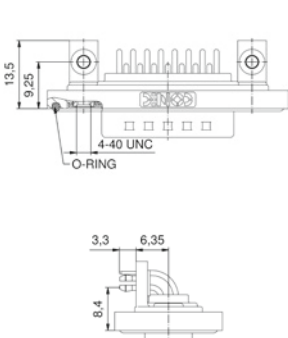
IP67 D-SUB CONNECTORS Standard

Solder pin, angled, .331"/8.4 mm
Precision machined contacts, metal bracket

4-40 UNC threaded insert

		No. of poles	Current rating [A]	Working voltage [V]	UL-File	Quality class	Part No. Socket contact	Part No. Plug contact
		09	75 (UL) / 5 (CSA VDE)	125	E202784	3	6STD09SAT99S20X	6STD09PAT99S20X
		15					6STD15SAT99S20X	6STD15PAT99S20X
		25					6STD25SAT99S20X	6STD25PAT99S20X
		37					6STD37SAT99S20X	6STD37PAT99S20X
		50					6STD50SAT99S20X	6STD50PAT99S20X

Clip for PCB 1.6 mm, 4-40 UNC threaded insert

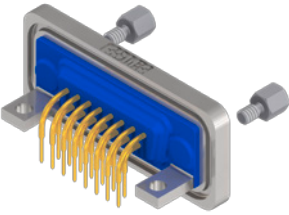
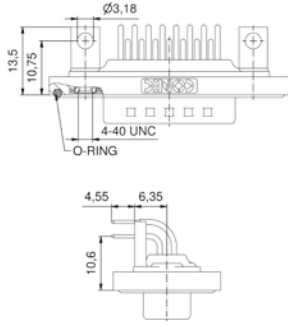
		09	75 (UL) / 5 (CSA VDE)	125	E202784	3	6STD09SAT99S40X	6STD09PAT99S40X
		15					6STD15SAT99S40X	6STD15PAT99S40X
		25					6STD25SAT99S40X	6STD25PAT99S40X
		37					6STD37SAT99S40X	6STD37PAT99S40X
		50					6STD50SAT99S40X	6STD50PAT99S40X

Shell: Brass tin plated
Quality class 3 (A) = 50 mating cycles
On request:
• Stainless steel
• Quality class 1 (C) = 500 mating cycles
• M3 thread

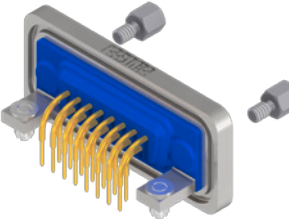
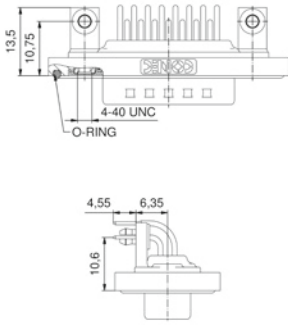
IP67 D-SUB CONNECTORS Standard

Solder pin, angled, .417" / 10.6 mm
Precision machined contacts, metal bracket

4-40 UNC threaded insert

		No. of poles	Current rating [A]	Working voltage [V]	UL-File	Quality class	Part No. Socket contact	Part No. Plug contact
 	09	75 (UI) / 5 (CSA VDE)	125	E202784	3	6STD09SAU99R20X	6STD09PAU99R20X	
	15					6STD15SAU99R20X	6STD15PAU99R20X	
	25					6STD25SAU99R20X	6STD25PAU99R20X	
	37					6STD37SAU99R20X	6STD37PAU99R20X	
	50					6STD50SAU99R20X	6STD50PAU99R20X	

Clip for PCB 1.6 mm, 4-40 UNC threaded insert

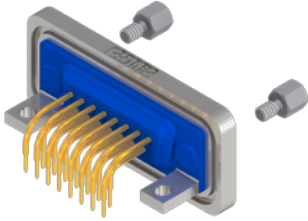
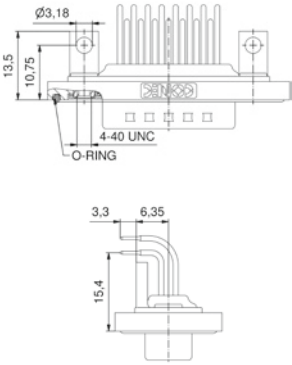
 	09	75 (UI) / 5 (CSA VDE)	125	E202784	3	6STD09SAU99R40X	6STD09PAU99R40X
	15					6STD15SAU99R40X	6STD15PAU99R40X
	25					6STD25SAU99R40X	6STD25PAU99R40X
	37					6STD37SAU99R40X	6STD37PAU99R40X
	50					6STD50SAU99R40X	6STD50PAU99R40X

Shell: Brass tin plated
Quality class 3 (A) = 50 mating cycles
On request:
• Stainless steel
• Quality class 1 (C) = 500 mating cycles
• M3 thread

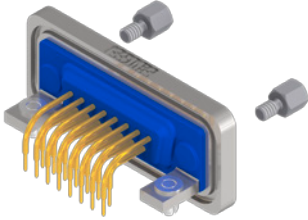
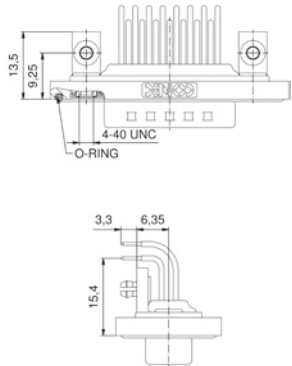
IP67 D-SUB CONNECTORS
Standard

Solder pin, angled, .606" / 15.4 mm
Precision machined contacts, metal bracket

4-40 UNC threaded insert

		No. of poles	Current rating [A]	Working voltage [V]	UL-File	Quality class	Part No. Socket contact	Part No. Plug contact
 	09	75 (UI) / 5 (CSA VDE)	125	E202784	3	6STD09SAZ99S20X	6STD09PAZ99S20X	
	15					6STD15SAZ99S20X	6STD15PAZ99S20X	
	25					6STD25SAZ99S20X	6STD25PAZ99S20X	
	37					6STD37SAZ99S20X	6STD37PAZ99S20X	

Clip for PCB 1.6 mm, 4-40 UNC threaded insert

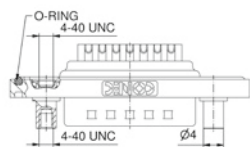
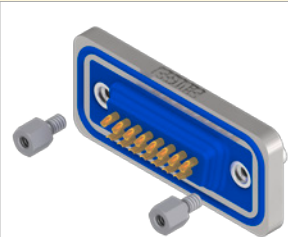
		No. of poles	Current rating [A]	Working voltage [V]	UL-File	Quality class	Part No. Socket contact	Part No. Plug contact
 	09	75 (UI) / 5 (CSA VDE)	125	E202784	3	6STD09SAZ99S40X	6STD09PAZ99S40X	
	15					6STD15SAZ99S40X	6STD15PAZ99S40X	
	25					6STD25SAZ99S40X	6STD25PAZ99S40X	
	37					6STD37SAZ99S40X	6STD37PAZ99S40X	

Shell: Brass tin plated
Quality class 3 (A) = 50 mating cycles
On request:
• Stainless steel
• Quality class 1 (C) = 500 mating cycles
• M3 thread

IP67 D-SUB CONNECTORS Standard

Solder cup, precision machined contacts
Front panel mounting, AWG 20

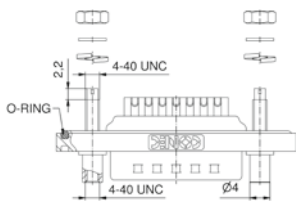
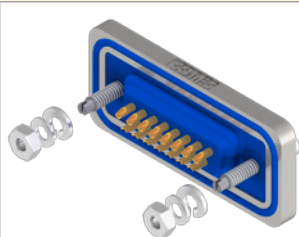
4-40 UNC Front spacer



No. of poles	Current rating [A]	Working voltage [V]	UL-File	Quality class	Part No. Socket contact	Part No. Plug contact
09	75 (UL) / 5 (CSA VDE)	125	E202784	3	6STD09SAM99B50X	6STD09PAM99B50X
15					6STD15SAM99B50X	6STD15PAM99B50X
25					6STD25SAM99B50X	6STD25PAM99B50X
37					6STD37SAM99B50X	6STD37PAM99B50X
50					6STD50SAM99B50X	6STD50PAM99B50X

Shell: Brass tin plated
Quality class 3 (A) = 50 mating cycles
On request:
• Stainless steel
• Quality class 1 (C) = 500 mating cycles
• M3 thread

4-40 UNC Front spacer and rear mounting stud

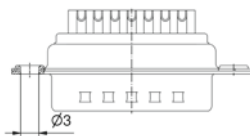
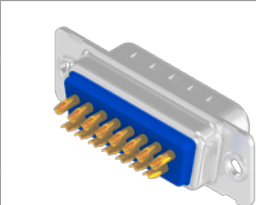


No. of poles	Current rating [A]	Working voltage [V]	UL-File	Quality class	Part No. Socket contact	Part No. Plug contact
09	75 (UL) / 5 (CSA VDE)	125	E202784	3	6STD09SAM99B70X	6STD09PAM99B70X
15					6STD15SAM99B70X	6STD15PAM99B70X
25					6STD25SAM99B70X	6STD25PAM99B70X
37					6STD37SAM99B70X	6STD37PAM99B70X
50					6STD50SAM99B70X	6STD50PAM99B70X

IP67 D-SUB CONNECTORS Standard

Solder cup, precision machined contacts
Hood Assembly, AWG 20

Through-hole Ø 3 mm



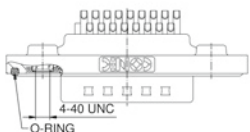
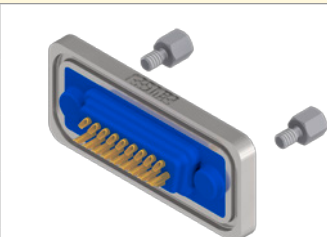
No. of poles	Current rating [A]	Working voltage [V]	UL-File	Quality class	Part No. Socket contact	Part No. Plug contact
09	75 (UL) / 5 (CSA VDE)	125	E202784	3	4STD09SAM99A10X	4STD09PAM99A10X
15					4STD15SAM99A10X	4STD15PAM99A10X
25					4STD25SAM99A10X	4STD25PAM99A10X
37					4STD37SAM99A10X	4STD37PAM99A10X
50					4STD50SAM99A10X	4STD50PAM99A10X

Shell: Brass tin plated
Quality class 3 (A) = 50 mating cycles
On request:
• Stainless steel
• Quality class 1 (C) = 500 mating cycles

IP67 D-SUB CONNECTORS High Density

Solder cup
Precision machined contacts, AWG 22

4-40 UNC threaded insert



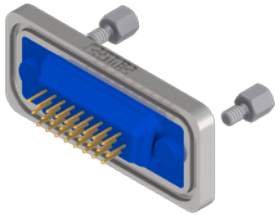
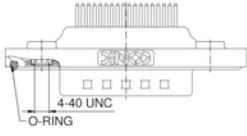
No. of poles	Current rating [A]	Working voltage [V]	UL-File	Quality class	Part No. Socket contact	Part No. Plug contact
15	3 (UL VDE) / 2.5 (CSA)	60	E202784	3	6HDD15SAM99B30X	6HDD15PAM99B30X
26					6HDD26SAM99B30X	6HDD26PAM99B30X
44					6HDD44SAM99B30X	6HDD44PAM99B30X
62					6HDD62SAM99B30X	6HDD62PAM99B30X
78					6HDD78SAM99B30X	6HDD78PAM99B30X

Shell: Brass tin plated
Quality class 3 (A) = 50 mating cycles
On request:
• Stainless steel
• Quality class 1 (C) = 500 mating cycles
• M3 thread

IP67 D-SUB CONNECTORS
High Density

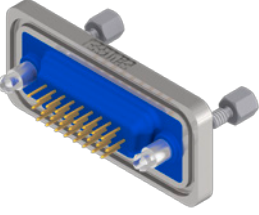
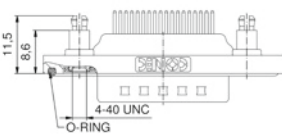
Solder pin, straight
Precision machined contacts

4-40 UNC threaded insert

 	No. of poles	Current rating [A]	Working voltage [V]	UL-File	Quality class	Part No. Socket contact	Part No. Plug contact
						Part No. Socket contact	Part No. Plug contact
	15	3 (UL, VDE) / 2.5 (CSA)	60	E202784	3	6HDD15SAR99B30X	6HDD15PAR99B30X
	26					6HDD26SAR99B30X	6HDD26PAR99B30X
	44					6HDD44SAR99B30X	6HDD44PAR99B30X
	62					6HDD62SAR99B30X	6HDD62PAR99B30X
	78					6HDD78SAR99B30X	6HDD78PAR99B30X

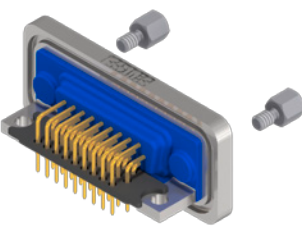
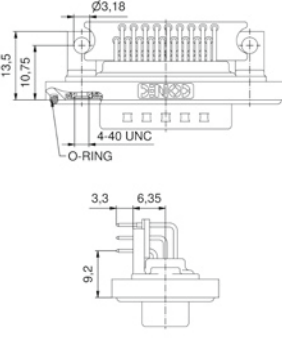
Shell: Brass tin plated
Quality class 3 (A) = 50 mating cycles
On request:
• Stainless steel
• Quality class 1 (C) = 500 mating cycles
• M3 thread

4-40 UNC threaded rear spacer clip for PCB 1.6 mm

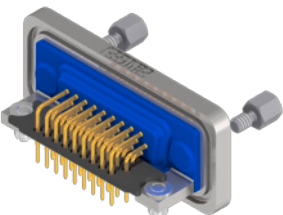
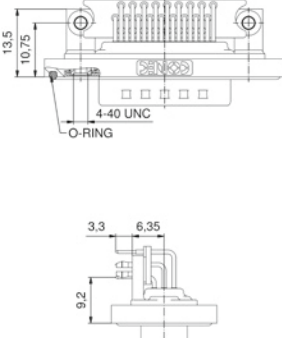
 	No. of poles	Current rating [A]	Working voltage [V]	UL-File	Quality class	Part No. Socket contact	Part No. Plug contact
						Part No. Socket contact	Part No. Plug contact
	15	3 (UL, VDE) / 2.5 (CSA)	60	E202784	3	6HDD15SAR99E20X	6HDD15PAR99E20X
	26					6HDD26SAR99E20X	6HDD26PAR99E20X
	44					6HDD44SAR99E20X	6HDD44PAR99E20X
	62					6HDD62SAR99E20X	6HDD62PAR99E20X
	78					6HDD78SAR99E20X	6HDD78PAR99E20X

Solder pin, angled, .362"/9.2 mm
Precision machined contacts, metal bracket

4-40 UNC threaded insert

 	No. of poles	Current rating [A]	Working voltage [V]	UL-File	Quality class	Part No. Socket contact	Part No. Plug contact
						Part No. Socket contact	Part No. Plug contact
	15	3 (UL, VDE) / 2.5 (CSA)	60	E202784	3	6HDD15SAY99R20X	6HDD15PAY99R20X
	26					6HDD26SAY99R20X	6HDD26PAY99R20X
	44					6HDD44SAY99R20X	6HDD44PAY99R20X
	62					6HDD62SAY99R20X	6HDD62PAY99R20X
	78					6HDD78SAY99R20X	6HDD78PAY99R20X

Clip for PCB 1.6 mm, 4-40 UNC threaded insert

 	No. of poles	Current rating [A]	Working voltage [V]	UL-File	Quality class	Part No. Socket contact	Part No. Plug contact
						Part No. Socket contact	Part No. Plug contact
	15	3 (UL, VDE) / 2.5 (CSA)	60	E202784	3	6HDD15SAY99R40X	6HDD15PAY99R40X
	26					6HDD26SAY99R40X	6HDD26PAY99R40X
	44					6HDD44SAY99R40X	6HDD44PAY99R40X
	62					6HDD62SAY99R40X	6HDD62PAY99R40X
	78					6HDD78SAY99R40X	6HDD78PAY99R40X

IP67 D-SUB CONNECTORS
High Density

Solder cup, precision machined contacts
Front panel mounting, AWG 22

4-40 UNC front spacer

No. of poles	Current rating [A]	Working voltage [V]	UL-File	Quality class	Part No. Socket contact		Part No. Plug contact	
15	3 (UL, VDE) / 2.5 (CSA)	60	E202784	3	6HDD15SAM99B50X	6HDD15PAM99B50X		
26					6HDD26SAM99B50X	6HDD26PAM99B50X		
44					6HDD44SAM99B50X	6HDD44PAM99B50X		
62					6HDD62SAM99B50X	6HDD62PAM99B50X		
78					6HDD78SAM99B50X	6HDD78PAM99B50X		

4-40 UNC Front spacer and rear mounting stud

No. of poles	Current rating [A]	Working voltage [V]	UL-File	Quality class	Part No. Socket contact		Part No. Plug contact	
15	3 (UL, VDE) / 2.5 (CSA)	60	E202784	3	6HDD15SAM99B70X	6HDD15PAM99B70X		
26					6HDD26SAM99B70X	6HDD26PAM99B70X		
44					6HDD44SAM99B70X	6HDD44PAM99B70X		
62					6HDD62SAM99B70X	6HDD62PAM99B70X		
78					6HDD78SAM99B70X	6HDD78PAM99B70X		

IP67 D-SUB CONNECTORS
High Density

Solder cup, precision machined contacts
Hood Assembly, AWG 22

Through-hole Ø 3 mm

No. of poles	Current rating [A]	Working voltage [V]	UL-File	Quality class	Part No. Socket contact		Part No. Plug contact	
15	3 (UL, VDE) / 2.5 (CSA)	60	E202784	3	4HDD15SAM99A10X	4HDD15PAM99A10X		
26					4HDD26SAM99A10X	4HDD26PAM99A10X		
44					4HDD44SAM99A10X	4HDD44PAM99A10X		
62					4HDD62SAM99A10X	4HDD62PAM99A10X		
78					4HDD78SAM99A10X	4HDD78PAM99A10X		

IP67 D-SUB CONNECTORS
Standard

Interface adapter, connector saver
Plug connector - socket connector

4-40 UNC threaded rear spacer

No. of poles	Current rating [A]	Working voltage [V]	UL-File	Quality class	Part No. Socket contact	
09	7.5 (UL) / 5 (CSA, VDE)	125	E202784	3	6STD09AAA99B90X	
15					6STD15AAA99B90X	
25					6STD25AAA99B90X	
37					6STD37AAA99B90X	

Shell: Brass tin plated
Quality class 3 (A) = 50 mating cycles
On request:
• Stainless steel
• Quality class 1 (C) = 500 mating cycles
• M3 thread

Shell: Brass tin plated
Quality class 3 (A) = 50 mating cycles
On request:
• Stainless steel
• Quality class 1 (C) = 500 mating cycles

Shell: Brass tin plated
Quality class 3 (A) = 50 mating cycles
On request:
• Stainless steel
• Quality class 1 (C) = 500 mating cycles