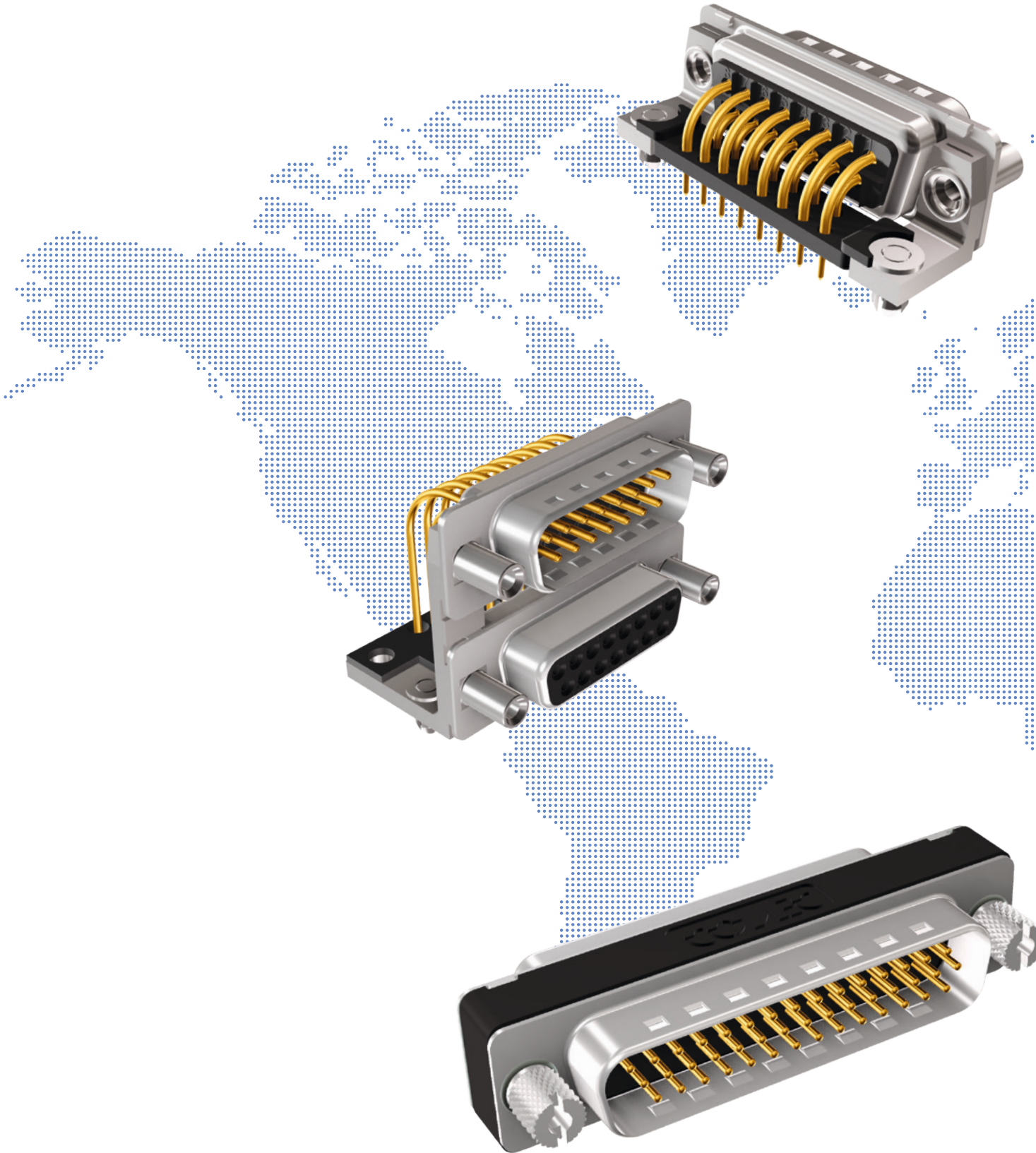
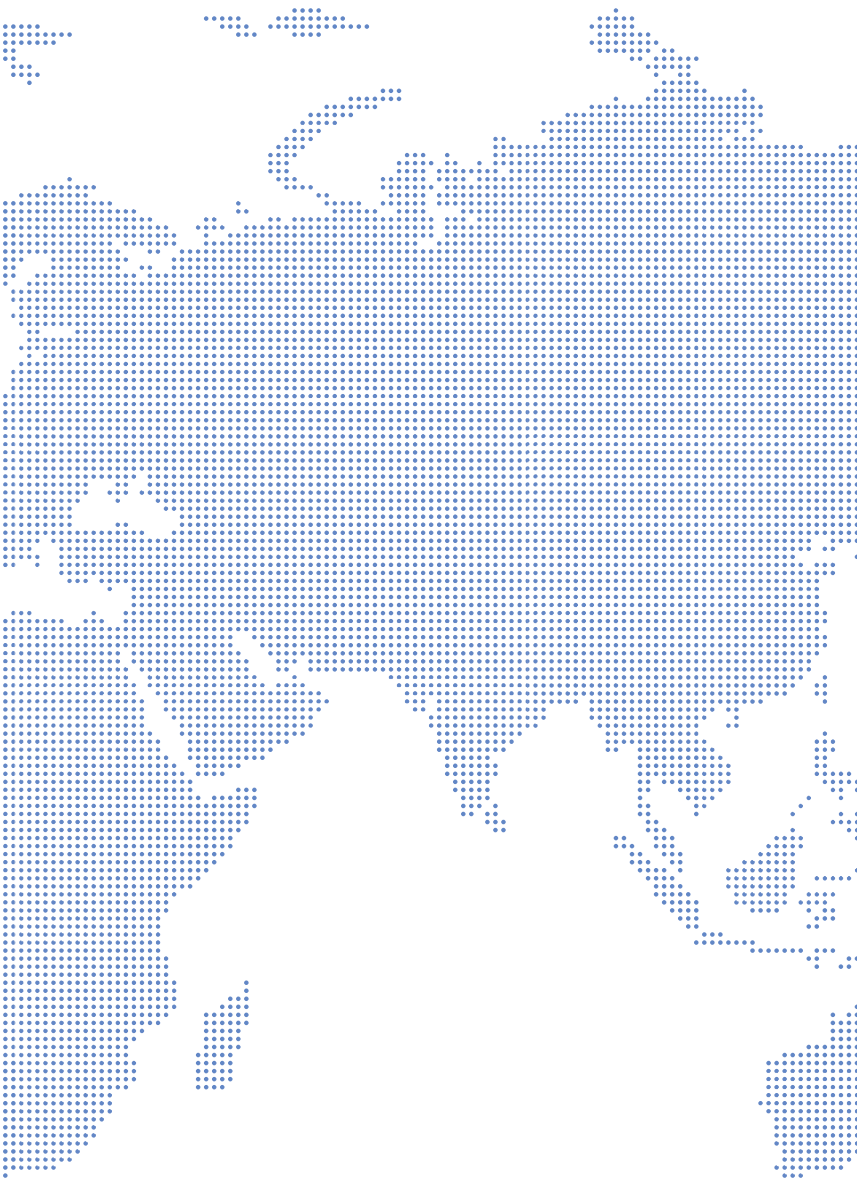
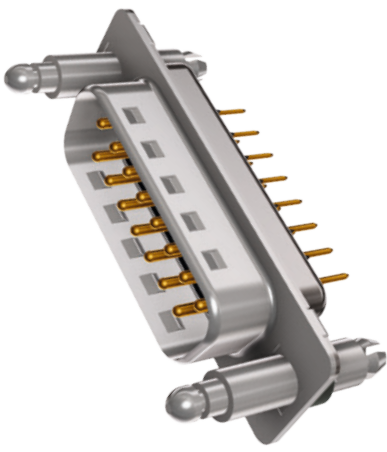


SECTION 1

# D-SUB CONNECTORS





## D-SUB CONNECTORS

### Product specification

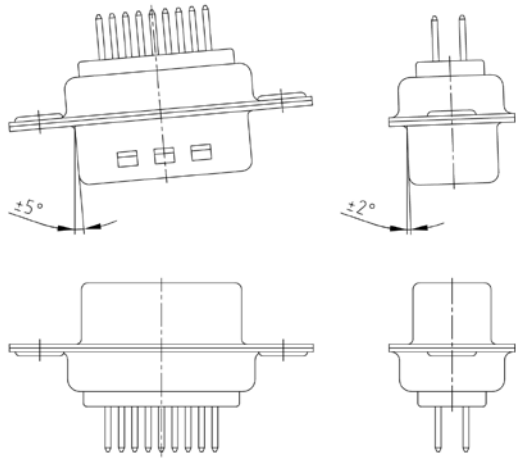
Basic material	D-SUB 9-, 15-, 25-, 37-, 50-pos.	D-SUB High Density 15-, 26-, 44-, 62-, 78-pos.
Contact	Copper alloy	
Contact plating	Gold over nickel	
Insulator	PBT GF UL 94 V-0	
Shell	Steel tin plated / nickel plated (on request brass tin plated or stainless steel)	
Technical Data		
Test voltage	1000 V, 50 Hz, for 1 Minute	
Working voltage	125 V AC/DC depending on isolation coordination refer to DIN VDE 0110 / IEC 664-1	60 V AC/DC
Current rating	7.5 A (UL) / 5 A (CSA, VDE)	3 A (UL, VDE) / 2.5 A (CSA)
Contact resistance	max. 10 mΩ prior to stressing ΔR max. 10 mΩ after stressing per IEC 60807-2	
Insulation resistance	≥ 5 GΩ	
Clearance and creepage distance	Contact - Contact ≥ 1.0 mm / 0.04" Contact - earth ≥ 1.2 mm / 0.047"	≥ 0.6 mm / 0.024"
Operating temperature	-55 °C to +125 °C	
Mating and unmating forces	9-pos. ≤ 30 N 15-pos. ≤ 50 N 25-pos. ≤ 83 N 37-pos. ≤ 123 N 50-pos. ≤ 167 N	15-pos. ≤ 50 N 26-pos. ≤ 84 N 44-pos. ≤ 120 N 62-pos. ≤ 170 N 78-pos. ≤ 200 N
Quality class	A = Quality class 3 = 50 mating cycles B = Quality class 2 = 200 mating cycles C = Quality class 1 = 500 mating cycles	

Technical specifications are subject to change without notice.

# D-SUB CONNECTORS

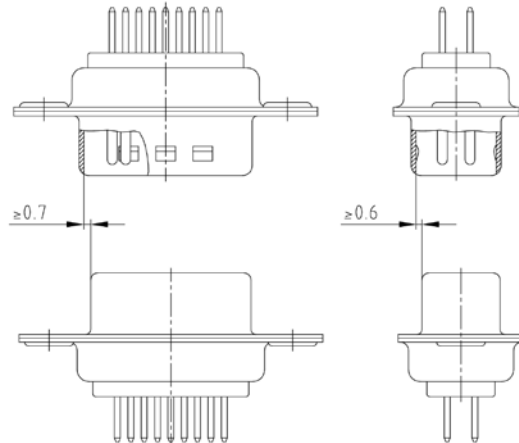
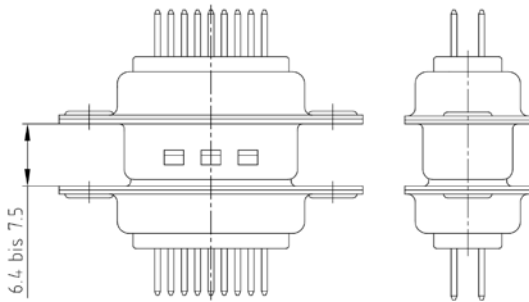
## Mating conditions

### Max. tilt angle for connector mating



### Range for safe contact

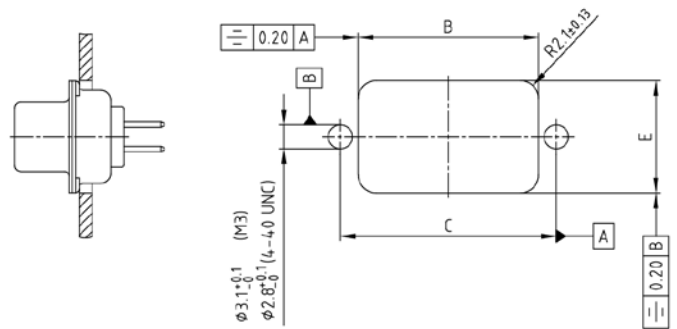
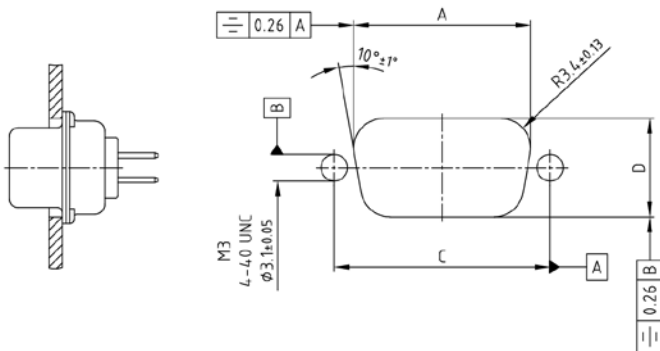
### Lock-in range



## Panel cut-out

### Back panel mounting

### Front panel mounting



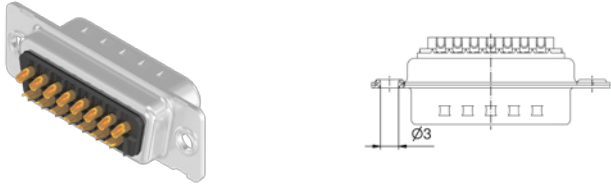
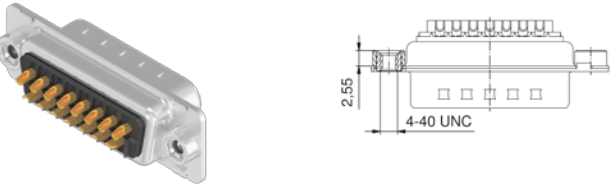
Shell size	No. of poles	A ±0.1	B ±0.1	C ±0.1	D ±0.1	E ±0.1
1	9 15	20.50	20.90	25.00	11.40	13.00
2	15 26	28.80	29.20	33.30	11.40	13.00
3	25 44	42.50	42.90	47.04	11.40	13.00
4	37 62	59.10	59.40	63.50	11.40	13.00
5	50 78	56.30	57.00	61.10	14.10	15.80

Technical specifications are subject to change without notice.

## D-SUB CONNECTORS Standard

Solder cup  
Precision machined contacts, AWG 20

Through-hole  $\varnothing$  3 mm

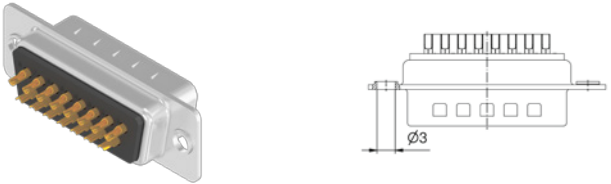
		No. of poles	Current rating [A]	Working voltage [V]	UL-File	Quality class	Part No. Socket contact	Part No. Plug contact
	9	75 (UL) / 5 (CSA VDE)	125	E202784	3	164A10019X	163A11069X	
	15					164A10029X	163A11079X	
	25					164A10039X	163A11089X	
	37					164A10049X	163A11099X	
	50					164A10059X	163A11109X	
<b>4-40 UNC threaded insert</b>								
	09	75 (UL) / 5 (CSA VDE)	125	E202784	3	164A10219X	163A11269X	
	15					164A10229X	163A11279X	
	25					164A10239X	163A11289X	
	37					164A10249X	163A11299X	
	50					164A10259X	163A11309X	

Shell: Steel tin plated  
Quality class 3 (A) = 50 mating cycles  
On request:  
• Brass tin plated or stainless steel  
• Quality class 1 (C) = 500 mating cycles  
• M3 thread

## D-SUB CONNECTORS Standard

Solder cup  
Stamped contacts, AWG 20

Through-hole  $\varnothing$  3 mm

		No. of poles	Current rating [A]	Working voltage [V]	UL-File	Quality class	Part No. Socket contact	Part No. Plug contact
	09	3	125		3	302A10019X	301A10019X	
	15					302A10029X	301A10029X	
	25					302A10059X	301A10059X	
	37					302A10069X	301A10069X	
	50					302A10079X	301A10079X	

Shell: Steel nickel plated  
Quality class 3 (A) = 50 mating cycles

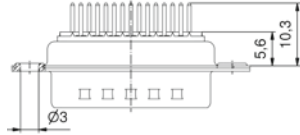
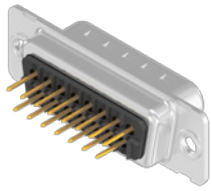


## D-SUB CONNECTORS Standard

Solder pin, straight  
Precision machined contacts

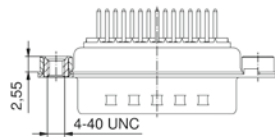
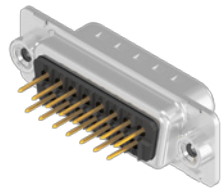
Shell: Steel tin plated  
Quality class 3 (A) = 50 mating cycles  
On request:  
• Brass tin plated or stainless steel  
• Quality class 1 (C) = 500 mating cycles  
• M3 thread

Through-hole  $\varnothing$  3 mm



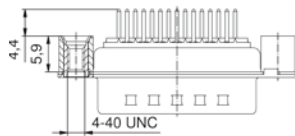
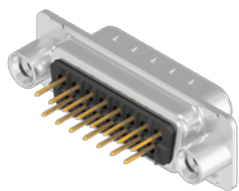
No. of poles	Current rating [A]	Working voltage [V]	UL-File	Quality class	Part No. Socket contact	Part No. Plug contact
09	75 (UL) / 5 (CSA VDE)	125	E202784	3	164A10069X	163A11119X
15					164A10079X	163A11129X
25					164A10089X	163A11139X
37					164A10099X	163A11149X
50					164A10109X	163A11159X

4-40 UNC threaded insert



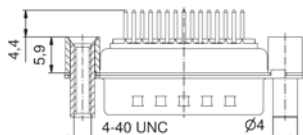
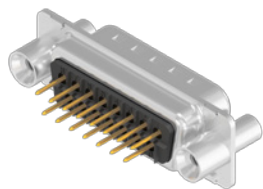
09	75 (UL) / 5 (CSA VDE)	125	E202784	3	164A10319X	163A11369X
15					164A10329X	163A11379X
25					164A10339X	163A11389X
37					164A10349X	163A11399X
50					164A10359X	163A11409X

4-40 UNC threaded rear spacer



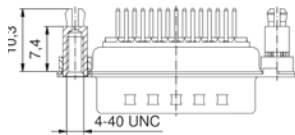
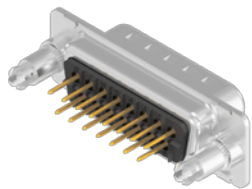
09	75 (UL) / 5 (CSA VDE)	125	E202784	3	164A12029X	163A13629X
15					164A12039X	163A13639X
25					164A12049X	163A13649X
37					164A12059X	163A13659X
50					164A12069X	163A13669X

4-40 UNC front, threaded rear spacer



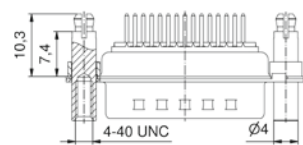
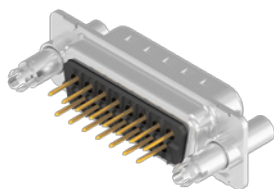
09	75 (UL) / 5 (CSA VDE)	125	E202784	3	164A12129X	163A13729X
15					164A12139X	163A13739X
25					164A12149X	163A13749X
37					164A12159X	163A13759X
50					164A12169X	163A13769X

4-40 UNC threaded rear spacer clip for PCB 1.6 mm



09	75 (UL) / 5 (CSA VDE)	125	E202784	3	164A16569X	163A16159X
15					164A16579X	163A16169X
25					164A16589X	163A16179X
37					164A16599X	163A16189X
50					164A16609X	163A16199X

4-40 UNC front, threaded rear spacer clip for PCB 1.6 mm

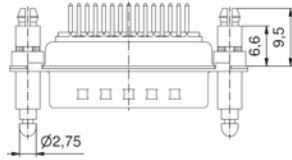
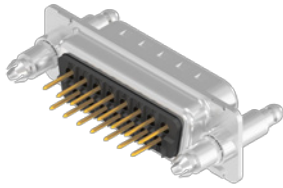


09	75 (UL) / 5 (CSA VDE)	125	E202784	3	164A16669X	163A16259X
15					164A16679X	163A16269X
25					164A16689X	163A16279X
37					164A16699X	163A16289X
50					164A16709X	163A16299X

## D-SUB CONNECTORS Standard

### CONEC SnapLock, Solder pin, straight Precision machined contacts

SnapLock bolt, Clip for PCB 1.6 mm [suitable for CONEC SnapLock hoods]



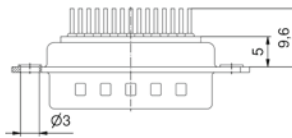
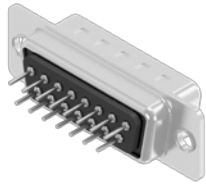
No. of poles	Current rating [A]	Working voltage [V]	UL-File	Quality class	Part No. Socket contact	Part No. Plug contact
09	7.5 (UL) / 5 (CSA VDE)	125	E202784	3	16-002143	16-002093
15					16-002153	16-002103
25					16-002163	16-002113
37					16-002173	16-002123
50					16-002183	16-002133

Shell: Steel tin plated  
Quality class 3 (A) = 50 mating cycles  
On request:  
• Brass tin plated or stainless steel  
• Quality class 1 (C) = 500 mating cycles

## D-SUB CONNECTORS Standard

### Solder pin, straight Stamped contacts

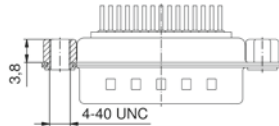
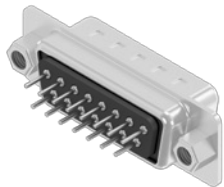
Through-hole Ø 3 mm



No. of poles	Current rating [A]	Working voltage [V]	UL-File	Quality class	Part No. Socket contact	Part No. Plug contact
09	3	125		3	DLS1XS4AD01X	DLS1XP4AD01X
15					DLS2XS4AD01X	DLS2XP4AD01X
25					DLS3XS4AD01X	DLS3XP4AD01X
37					DLS4XS4AD01X	DLS4XP4AD01X
50					DLS5XS4AD01X	DLS5XP4AD01X

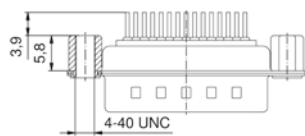
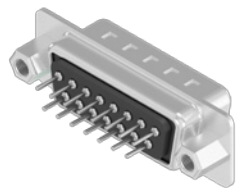
Shell: Steel nickel plated  
Quality class 3 (A) = 50 mating cycles

4-40 UNC threaded insert



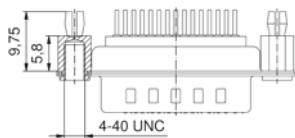
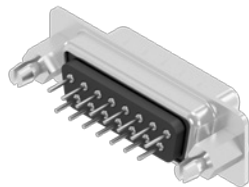
09	3	125		3	DLS1XS4AG06X	DLS1XP4AG06X
15					DLS2XS4AG06X	DLS2XP4AG06X
25					DLS3XS4AG06X	DLS3XP4AG06X
37					DLS4XS4AG06X	DLS4XP4AG06X
50					DLS5XS4AG06X	DLS5XP4AG06X

4-40 UNC threaded rear spacer



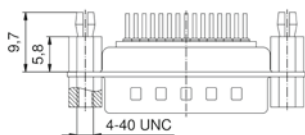
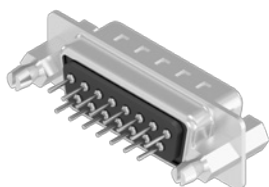
09	3	125		3	DLS1XS4AA37X	DLS1XP4AA37X
15					DLS2XS4AA37X	DLS2XP4AA37X
25					DLS3XS4AA37X	DLS3XP4AA37X
37					DLS4XS4AA37X	DLS4XP4AA37X
50					DLS5XS4AA37X	DLS5XP4AA37X

4-40 UNC threaded rear spacer clip for PCB 1.6 mm



09	3	125		3	DLS1XS4AA35X	DLS1XP4AA35X
15					DLS2XS4AA35X	DLS2XP4AA35X
25					DLS3XS4AA35X	DLS3XP4AA35X
37					DLS4XS4AA35X	DLS4XP4AA35X
50					DLS5XS4AA35X	DLS5XP4AA35X

4-40 UNC front, threaded rear spacer clip for PCB 1.6 mm

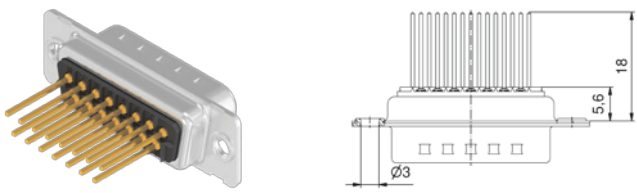


09	3	125		3	DLS1XS4AA39X	DLS1XP4AA39X
15					DLS2XS4AA39X	DLS2XP4AA39X
25					DLS3XS4AA39X	DLS3XP4AA39X
37					DLS4XS4AA39X	DLS4XP4AA39X
50					DLS5XS4AA39X	DLS5XP4AA39X

**D-SUB CONNECTORS**  
Standard

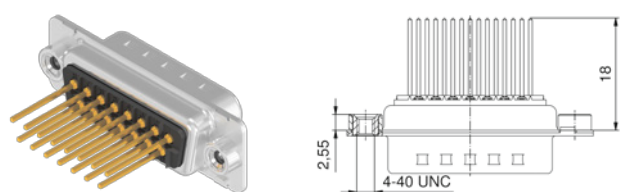
Wire wrap  
Precision machined contacts

Through-hole Ø 3 mm

	No. of poles	Current rating [A]	Working voltage [V]	UL-File	Quality class	Part No. Socket contact	Part No. Plug contact
						Part No. Socket contact	Part No. Plug contact
	09	75 (UI) / 5 (CSA VDE)	125	E202784	3	164A10119X	163A11169X
	15					164A10129X	163A11179X
	25					164A10139X	163A11189X
	37					164A10149X	163A11199X
	50					164A10159X	163A11209X

Shell: Steel tin plated  
Quality class 3 (A) = 50 mating cycles  
On request:  
• Brass tin plated or stainless steel  
• Quality class 1 (C) = 500 mating cycles  
• M3 thread

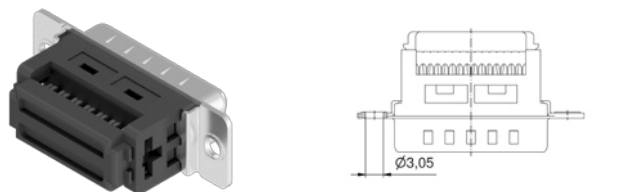
4-40 UNC threaded insert

	No. of poles	Current rating [A]	Working voltage [V]	UL-File	Quality class	Part No. Socket contact	Part No. Plug contact
						Part No. Socket contact	Part No. Plug contact
	09	75 (UI) / 5 (CSA VDE)	125	E202784	3	164A10419X	163A11469X
	15					164A10429X	163A11479X
	25					164A10439X	163A11489X
	37					164A10449X	163A11499X
	50					164A10459X	163A11509X

**D-SUB CONNECTORS**  
Standard

IDC for flat cable  
Stamped contacts, AWG 26-28

Through-hole Ø 3 mm

	No. of poles	Current rating [A]	Working voltage [V]	UL-File	Quality class	Part No. Socket contact	Part No. Plug contact
						Part No. Socket contact	Part No. Plug contact
	09	1	125		3	302A10089X	301A10089X
	15					302A10099X	301A10099X
	25					302A10109X	301A10109X
	37					302A10119X	301A10119X

Shell: Steel nickel plated  
Quality class 3 (A) = 50 mating cycles  
Connector includes strain relief

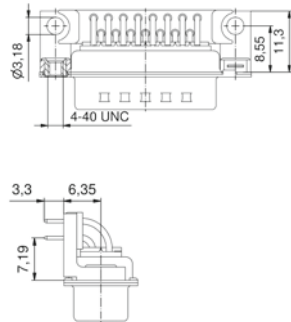
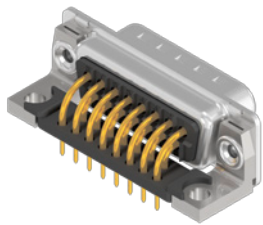


## D-SUB CONNECTORS Standard

Solder pin, angled, .318"/7.19 mm  
Precision machined contacts, metal bracket

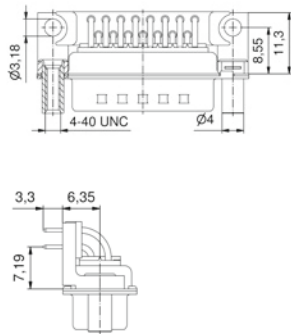
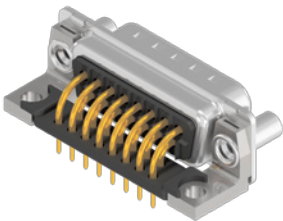
Shell: Steel tin plated  
Quality class 3 (A) = 50 mating cycles  
On request:  
• Brass tin plated or stainless steel  
• Quality class 1 (C) = 500 mating cycles  
• M3 thread

### 4-40 UNC threaded insert



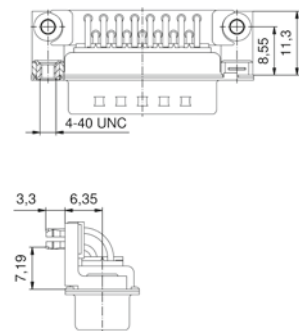
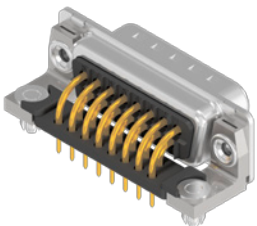
No. of poles	Current rating [A]	Working voltage [V]	UL-File	Quality class	Part No. Socket contact	Part No. Plug contact
09	75 (UI) / 5 (CSA VDE)	125	E202784	3	164A11519X	163A13069X
15					164A11529X	163A13079X
25					164A11539X	163A13089X
37					164A11549X	163A13099X
50					164A18969X	163A18549X

### 4-40 UNC front spacer



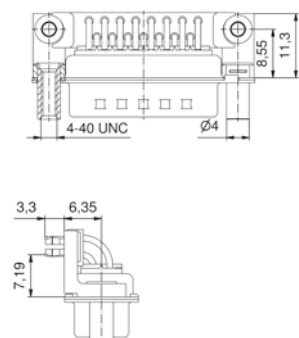
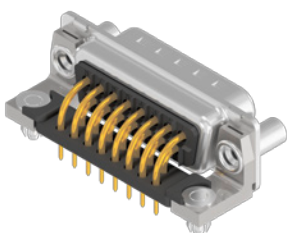
09	75 (UI) / 5 (CSA VDE)	125	E202784	3	164A16929X	163A16519X
15					164A16939X	163A16529X
25					164A16949X	163A16539X
37					164A16959X	163A16549X
50					164A19019X	163A18589X

### Clip for PCB 1.6 mm, 4-40 UNC threaded insert



09	75 (UI) / 5 (CSA VDE)	125	E202784	3	164A17939X	163A17529X
15					164A17949X	163A17539X
25					164A17959X	163A17549X
37					164A17969X	163A17559X
50					164A18989X	163A18569X

### Clip for PCB 1.6 mm, 4-40 UNC front spacer



09	75 (UI) / 5 (CSA VDE)	125	E202784	3	164A19039X	163A18609X
15					164A19049X	163A18619X
25					164A19059X	163A18629X
37					164A19069X	163A18639X
50					164A19079X	163A18649X

## D-SUB CONNECTORS Standard

Solder pin, angled, .318"/7.19 mm  
Precision machined contacts, plastic bracket

Clip for PCB 1.6 mm, 4-40 UNC threaded insert

No. of poles	Current rating [A]	Working voltage [V]	UL-File	Quality class	Part No. Socket contact	Part No. Plug contact
09	75 (UI) / 5 (CSA VDE)	125	E202784	3	164A18809X	163A18389X
15					164A18819X	163A18399X
25					164A18829X	163A18409X
37					164A18839X	163A18419X

Shell: Steel tin plated  
Quality class 3 (A) = 50 mating cycles  
On request:  
• Brass tin plated or stainless steel  
• Quality class 1 (C) = 500 mating cycles  
• M3 thread

Clip for PCB 1.6 mm, 4-40 UNC front spacer

No. of poles	Current rating [A]	Working voltage [V]	UL-File	Quality class	Part No. Socket contact	Part No. Plug contact
09	75 (UI) / 5 (CSA VDE)	125	E202784	3	164A18889X	163A18469X
15					164A18899X	163A18479X
25					164A18909X	163A18489X
37					164A18919X	163A18499X

## D-SUB CONNECTORS Standard

Solder pin, angled, .318"/8.09 mm  
Stamped contacts, plastic bracket

Clip for PCB 1.6 mm, 4-40 UNC threaded insert

No. of poles	Current rating [A]	Working voltage [V]	UL-File	Quality class	Part No. Socket contact	Part No. Plug contact
09	3	125		3	302A11339X	301A11029X
15					302A11349X	301A11039X
25					302A11359X	301A11049X
37					302A11369X	301A11059X

Shell: Steel nickel plated  
Quality class 3 (A) = 50 mating cycles

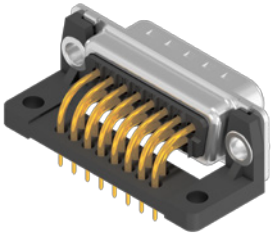
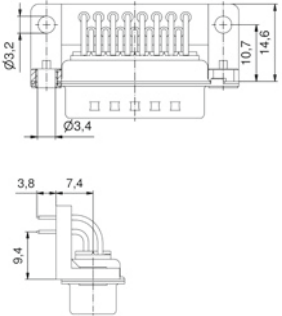
Clip for PCB 1.6 mm, 4-40 UNC front spacer

No. of poles	Current rating [A]	Working voltage [V]	UL-File	Quality class	Part No. Socket contact	Part No. Plug contact
09	3	125		3	302A11249X	301A10939X
15					302A11259X	301A10949X
25					302A11269X	301A10959X
37					302A11279X	301A10969X

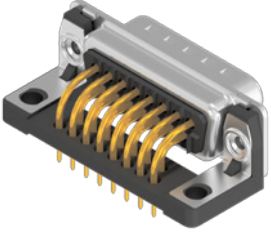
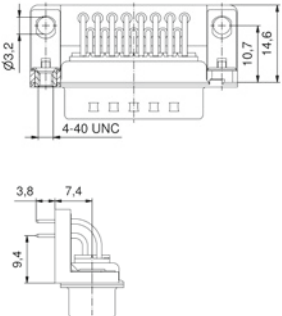
## D-SUB CONNECTORS Standard

Solder pin, angled, .370" / 9.4 mm  
Precision machined contacts, plastic bracket

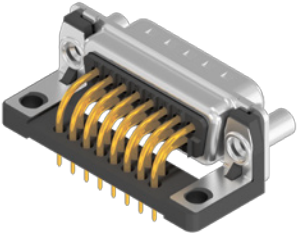
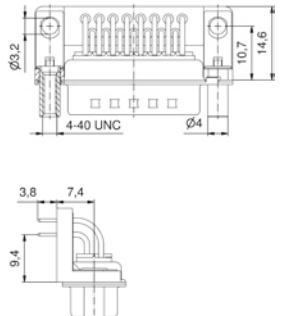
Through-hole  $\varnothing$  3,4 mm

		No. of poles	Current rating [A]	Working voltage [V]	UL-File	Quality class	Part No. Socket contact	Part No. Plug contact
 	09	75 (UI) / 5 (CSA VDE)	125	E202784	3	164A10669X	163A11719X	
	15					164A10679X	163A11729X	
	25					164A10689X	163A11739X	
	37					164A10699X	163A11749X	
	50					164A10709X	163A11759X	

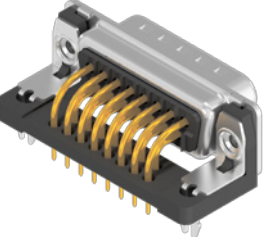
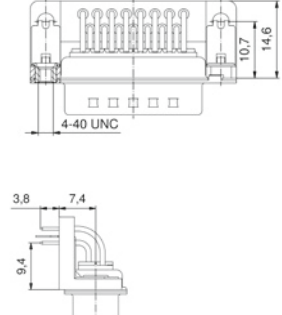
Grounding strap, 4-40 UNC threaded insert

 	09	75 (UI) / 5 (CSA VDE)	125	E202784	3	164A12329X	163A14119X
	15					164A12339X	163A14129X
	25					164A12349X	163A14139X
	37					164A12359X	163A14149X

Grounding strap, 4-40 UNC front spacer

 	09	75 (UI) / 5 (CSA VDE)	125	E202784	3	164A12229X	163A13829X
	15					164A12239X	163A13839X
	25					164A12249X	163A13849X
	37					164A12259X	163A13859X

Clip for PCB 1.6 mm, 4-40 UNC threaded insert

 	09	75 (UI) / 5 (CSA VDE)	125	E202784	3	164A12969X	163A14489X
	15					164A12979X	163A14499X
	25					164A12989X	163A14509X
	37					164A12999X	163A14519X
	50					164A19139X	163A18709X

Shell: Steel tin plated  
Quality class 3 (A) = 50 mating cycles  
On request:  
• Brass tin plated or stainless steel  
• Quality class 1 (C) = 500 mating cycles  
• M3 thread

**D-SUB CONNECTORS**  
Standard

Solder pin, angled, .370" / 9.4 mm  
Precision machined contacts, plastic bracket

Clip for PCB 1.6 mm, 4-40 UNC front spacer

Shell: Steel tin plated  
Quality class 3 (A) = 50 mating cycles  
On request:  
• Brass tin plated or stainless steel  
• Quality class 1 (C) = 500 mating cycles  
• M3 thread

Image	No. of poles	Current rating [A]	Working voltage [V]	UL-File	Quality class	Part No. Socket contact	Part No. Plug contact
	09	75 (UL) / 5 (CSA VDE)	125	E202784	3	164A13089X	163A14609X
	15					164A13099X	163A14619X
	25					164A13109X	163A14629X
	37					164A13119X	163A14639X
	50					164A19159X	163A18729X

Solder pin, angled, .370" / 9.4 mm  
Precision machined contacts, metal bracket

4-40 UNC threaded insert

Part No. Socket contact Part No. Plug contact

Image	No. of poles	Current rating [A]	Working voltage [V]	UL-File	Quality class	Part No. Socket contact	Part No. Plug contact
	09	75 (UL) / 5 (CSA VDE)	125	E202784	3	164A10969X	163A12019X
	15					164A10979X	163A12029X
	25					164A10989X	163A12039X
	37					164A10999X	163A12049X
	50					164A18739X	163A18319X

Clip for PCB 1.6 mm, 4-40 UNC threaded insert

Image	No. of poles	Current rating [A]	Working voltage [V]	UL-File	Quality class	Part No. Socket contact	Part No. Plug contact
	09	75 (UL) / 5 (CSA VDE)	125	E202784	3	164A16769X	163A16359X
	15					164A16779X	163A16369X
	25					164A16789X	163A16379X
	37					164A16799X	163A16389X
	50					164A18759X	163A18339X

**D-SUB CONNECTORS**  
Standard

Solder pin, angled, .370" / 10.3 mm  
Stamped contacts, plastic bracket

Clip for PCB 1.6 mm, 4-40 UNC front spacer

Shell: Steel nickel plated  
Quality class 3 (A) = 50 mating cycles

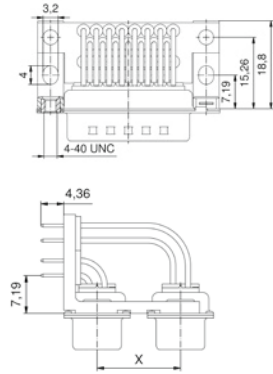
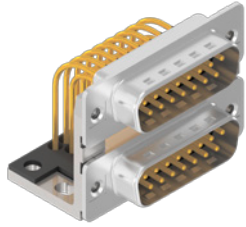
Image	No. of poles	Current rating [A]	Working voltage [V]	UL-File	Quality class	Part No. Socket contact	Part No. Plug contact
	09	3	125		3	302A10779X	301A10679X
	15					302A10789X	301A10689X
	25					302A10799X	301A10699X
	37					302A10809X	301A10709X

## D-SUB CONNECTORS Dual Port

Plug upper - Plug bottom  
Solder pin, angled, precision machined contacts

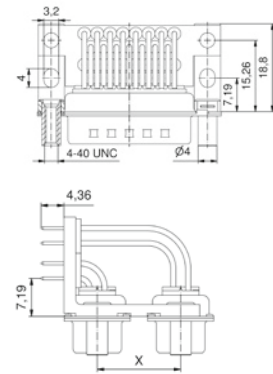
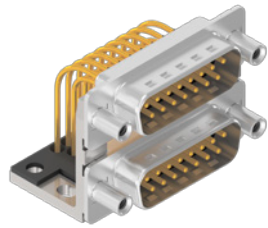
Shell: Steel tin plated  
Quality class 3 (A) = 50 mating cycles  
On request:  
• Brass tin plated or stainless steel  
• Quality class 1 (C) = 500 mating cycles  
• M3 thread

### 4-40 UNC threaded insert



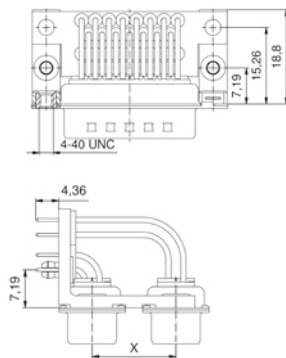
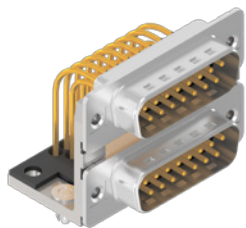
No. of poles	Current rating [A]	Working voltage [V]	UL-File	Quality class	Connector spacing X = [inches, mm]	Part No.
09/09	75 (UI) / 5 (CSA VDE)	125	E202784	3	.625 15.88	163A15199X
15/15						163A15209X
25/25						163A15219X
37/37						163A15229X
09/09						163A15519X
15/15						163A15529X
25/25						163A15539X
37/37						163A15549X

### 4-40 UNC front spacer



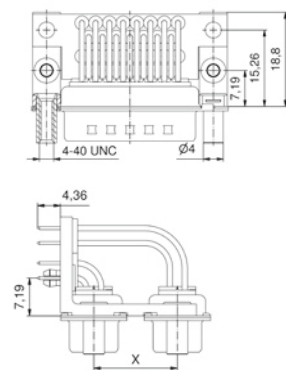
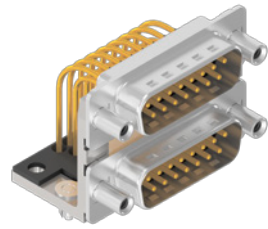
09/09	75 (UI) / 5 (CSA VDE)	125	E202784	3	.625 15.88	163A15359X
15/15						163A15369X
25/25						163A15379X
37/37						163A15389X
09/09						163A15679X
15/15						163A15689X
25/25						163A15699X
37/37						163A15709X

### Clip for PCB 1.6 mm, 4-40 UNC threaded insert



09/09	75 (UI) / 5 (CSA VDE)	125	E202784	3	.625 15.88	163A19969X
15/15						163A19979X
25/25						163A19989X
37/37						163A19999X
09/09						163A19489X
15/15						163A19499X
25/25						163A19509X
37/37						163A19519X

### Clip for PCB 1.6 mm, 4-40 UNC front spacer



09/09	75 (UI) / 5 (CSA VDE)	125	E202784	3	.625 15.88	163A19329X
15/15						163A19339X
25/25						163A19349X
37/37						163A19359X
09/09						163A19649X
25/25						163A19659X
25/25						163A19669X
37/37						163A19679X

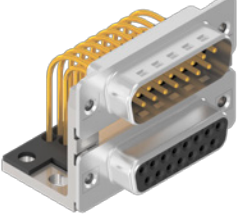
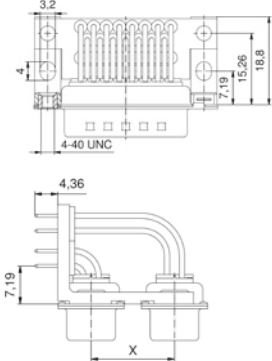


## D-SUB CONNECTORS Dual Port

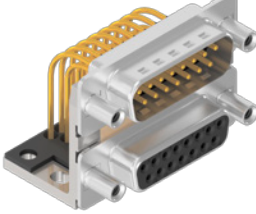
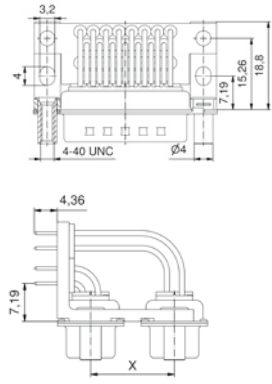
Plug upper - Socket bottom  
Solder pin, angled, precision machined contacts

Shell: Steel tin plated  
Quality class 3 (A) = 50 mating cycles  
On request:  
• Brass tin plated or stainless steel  
• Quality class 1 (C) = 500 mating cycles  
• M3 thread

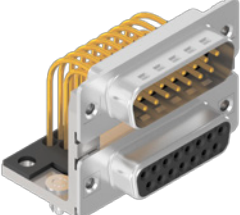
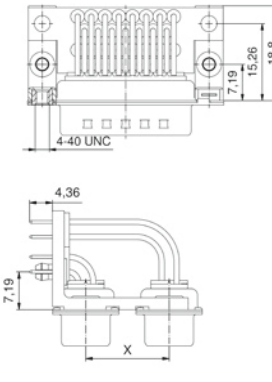
### 4-40 UNC threaded insert

	No. of poles	Current rating [A]	Working voltage [V]	UL-File	Quality class	Connector spacing X = [inches, mm]	Part No.
 	09/09	75 (UI) / 5 (CSA VDE)	125	E202784	3	.625 15.88	163A15239X
	15/15						163A15249X
	25/25						163A15259X
	37/37						163A15269X
	09/09					163A15559X	
	15/15					163A15569X	
	25/25					163A15579X	
	37/37					163A15589X	

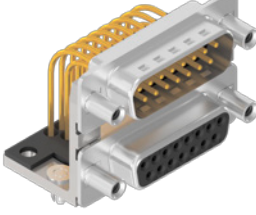
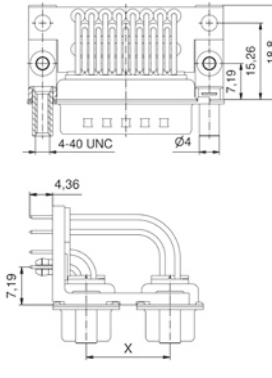
### 4-40 UNC front spacer

 	09/09	75 (UI) / 5 (CSA VDE)	125	E202784	3	.625 15.88	163A15399X
	15/15						163A15409X
	25/25						163A15419X
	37/37						163A15429X
	09/09					163A15719X	
	15/15					163A15729X	
	25/25					163A15739X	
	37/37					163A15749X	

### Clip for PCB 1.6 mm, 4-40 UNC threaded insert

 	09/09	75 (UI) / 5 (CSA VDE)	125	E202784	3	.625 15.88	163A20009X
	15/15						163A20019X
	25/25						163A20029X
	37/37						163A20039X
	09/09					163A19529X	
	15/15					163A19539X	
	25/25					163A19549X	
	37/37					163A19559X	

### Clip for PCB 1.6 mm, 4-40 UNC front spacer

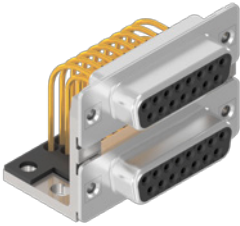
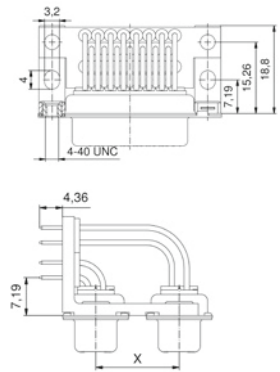
 	09/09	75 (UI) / 5 (CSA VDE)	125	E202784	3	.625 15.88	163A19369X
	15/15						163A19379X
	25/25						163A19389X
	37/37						163A19399X
	09/09					163A19689X	
	15/15					163A19699X	
	25/25					163A19709X	
	37/37					163A19719X	

## D-SUB CONNECTORS Dual Port

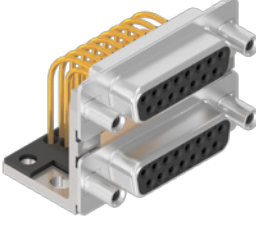
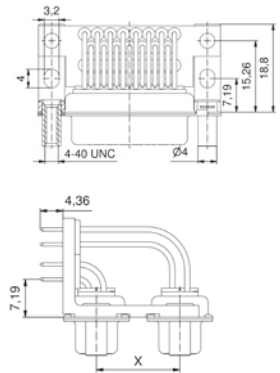
Socket upper - Socket bottom  
Solder pin, angled, precision machined contacts

Shell: Steel tin plated  
Quality class 3 (A) = 50 mating cycles  
On request:  
• Brass tin plated or stainless steel  
• Quality class 1 (C) = 500 mating cycles  
• M3 thread

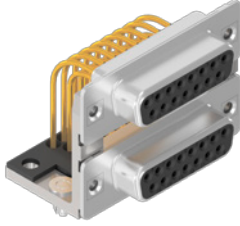
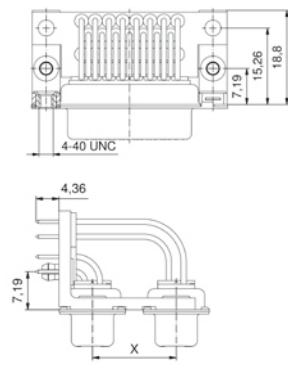
### 4-40 UNC threaded insert

		No. of poles	Current rating [A]	Working voltage [V]	UL-File	Quality class	Connector spacing X = [inches, mm]	Part No.
		09/09	75 (UI) / 5 (CSA VDE)	125	E202784	3	.625 15.88	164A15609X
		15/15						164A15619X
		25/25						164A15629X
		37/37						164A15639X
		09/09					164A15929X	
		15/15					164A15939X	
		25/25					164A15949X	
		37/37					164A15959X	

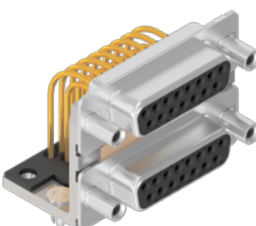
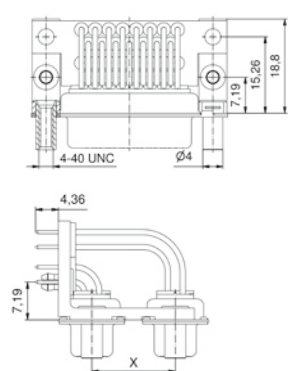
### 4-40 UNC front spacer

		09/09	75 (UI) / 5 (CSA VDE)	125	E202784	3	.625 15.88	164A15769X
		15/15						164A15779X
		25/25						164A15789X
		37/37						164A15799X
		09/09					164A16089X	
		15/15					164A16099X	
		25/25					164A16109X	
		37/37					164A16119X	

### Clip for PCB 1.6 mm, 4-40 UNC threaded insert

		09/09	75 (UI) / 5 (CSA VDE)	125	E202784	3	.625 15.88	164A20409X
		15/15						164A20419X
		25/25						164A20429X
		37/37						164A20439X
		09/09					164A19919X	
		15/15					164A19929X	
		25/25					164A19939X	
		37/37					164A19949X	

### Clip for PCB 1.6 mm, 4-40 UNC front spacer

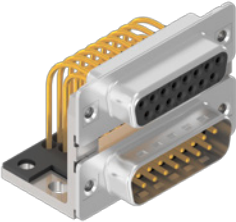
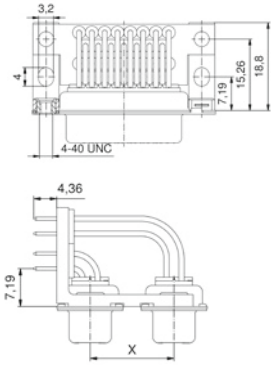
		09/09	75 (UI) / 5 (CSA VDE)	125	E202784	3	.625 15.88	164A19759X
		15/15						164A19769X
		25/25						164A19779X
		37/37						164A19789X
		09/09					164A20079X	
		15/15					164A20089X	
		25/25					164A20099X	
		37/37					164A20109X	

## D-SUB CONNECTORS Dual Port

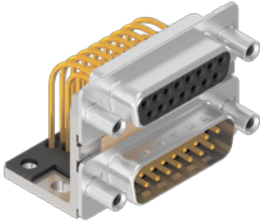
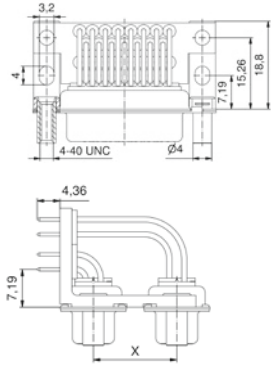
Socket upper - Plug bottom  
Solder pin, angled, precision machined contacts

Shell: Steel tin plated  
Quality class 3 (A) = 50 mating cycles  
On request:  
• Brass tin plated or stainless steel  
• Quality class 1 (C) = 500 mating cycles  
• M3 thread

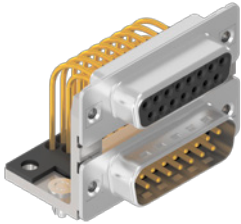
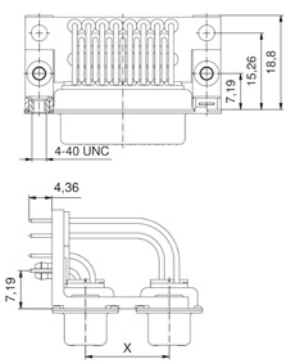
### 4-40 UNC threaded insert

	No. of poles	Current rating [A]	Working voltage [V]	UL-File	Quality class	Connector spacing X = [inches, mm]	Part No.
 	09/09	75 (UI) / 5 (CSA VDE)	125	E202784	3	.625 15.88	164A15649X
	15/15						164A15659X
	25/25						164A15669X
	37/37						164A15679X
	09/09						164A15969X
	15/15						164A15979X
	25/25						164A15989X
	37/37						164A15999X

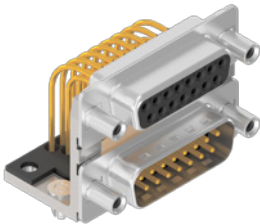
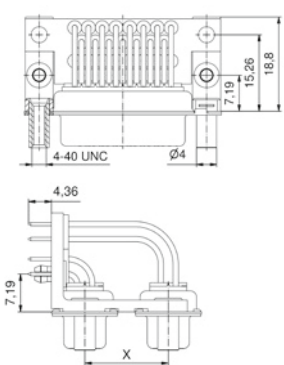
### 4-40 UNC front spacer

 	09/09	75 (UI) / 5 (CSA VDE)	125	E202784	3	.625 15.88	164A15809X
	15/15						164A15819X
	25/25						164A15829X
	37/37						164A15839X
	09/09						164A16129X
	15/15						164A16139X
	25/25						164A16149X
	37/37						164A16159X

### Clip for PCB 1.6 mm, 4-40 UNC threaded insert

 	09/09	75 (UI) / 5 (CSA VDE)	125	E202784	3	.625 15.88	164A20449X
	15/15						164A20459X
	25/25						164A20469X
	37/37						164A20479X
	09/09						164A19959X
	15/15						164A19969X
	25/25						164A19979X
	37/37						164A19989X

### Clip for PCB 1.6 mm, 4-40 UNC front spacer

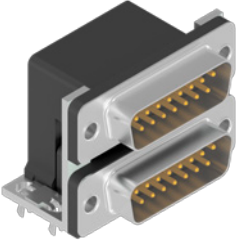
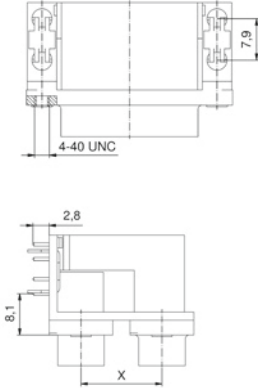
 	09/09	75 (UI) / 5 (CSA VDE)	125	E202784	3	.625 15.88	164A19799X
	15/15						164A19809X
	25/25						164A19819X
	09/09						164A20119X
	15/15						164A20129X
	25/25						164A20139X
	37/37						164A20149X

**D-SUB CONNECTORS**  
Dual Port

Plug upper - Plug bottom  
Solder pin, angled, stamped contacts

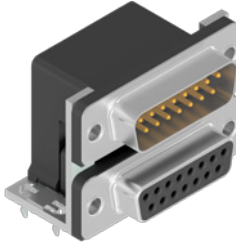
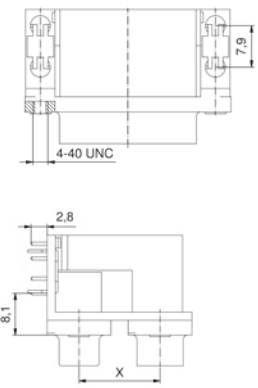
Clip for PCB 1.6 mm, 4-40 UNC threaded insert

Shell: Steel nickel plated  
Quality class 3 (A) = 50 mating cycles

		No. of poles	Current rating [A]	Working voltage [V]	UL-File	Quality class	Connector spacing X = [inches, mm]	Part No.
		09/09	3	125		3	.625	DLS1PP5AN21X
		15/15					15.88	DLS2PP5AN21X
		25/25					DLS3PP5AN21X	
		37/37					DLS4PP5AN21X	
		09/09					.750	DLS1PP5AN23X
		15/15					19.05	DLS2PP5AN23X
		25/25					DLS3PP5AN23X	
		37/37					DLS4PP5AN23X	

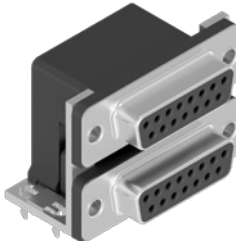
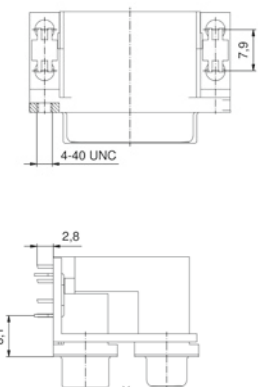
Plug upper - Socket bottom  
Solder pin, angled, stamped contacts

Clip for PCB 1.6 mm, 4-40 UNC threaded insert

		09/09	3	125		3	.625	DLS1PS5AN21X
		15/15					15.88	DLS2PS5AN21X
		25/25					DLS3PS5AN21X	
		37/37					DLS4PS5AN21X	
		09/09					.750	DLS1PS5AN23X
		15/15					19.05	DLS2PS5AN23X
		25/25					DLS3PS5AN23X	
		37/37					DLS4PS5AN23X	

Socket upper - Socket bottom  
Solder pin, angled, stamped contacts

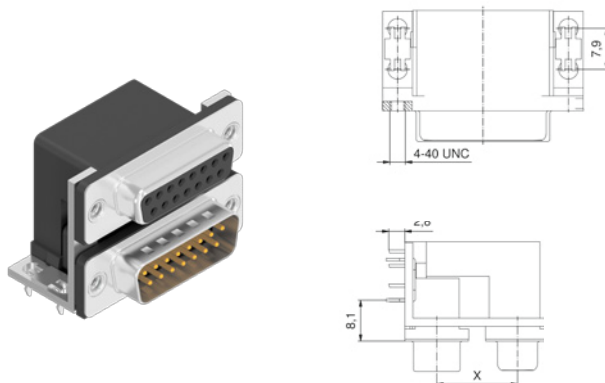
Clip for PCB 1.6 mm, 4-40 UNC threaded insert

		09/09	3	125		3	.625	DLS1SS5AN21X
		15/15					15.88	DLS2SS5AN21X
		25/25					DLS3SS5AN21X	
		37/37					DLS4SS5AN21X	
		09/09					.750	DLS1SS5AN23X
		15/15					19.05	DLS2SS5AN23X
		25/25					DLS3SS5AN23X	
		37/37					DLS4SS5AN23X	

## D-SUB CONNECTORS Dual Port

Socket upper - Plug bottom  
Solder pin, angled, stamped contacts

Clip for PCB 1.6 mm, 4-40 UNC threaded insert

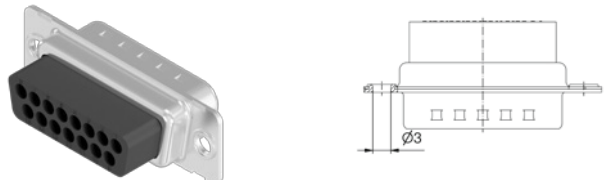
	No. of poles	Current rating [A]	Working voltage [V]	UL-File	Quality class	Connector spacing X = [inches, mm]	Part No.					
							Socket contact	Plug contact				
	09/09	3	125		3	.625 15.88	DLS1SP5AN21X	DLS1SP5AN21X				
	15/15						DLS2SP5AN21X	DLS2SP5AN21X				
	25/25						DLS3SP5AN21X	DLS3SP5AN21X				
	37/37						DLS4SP5AN21X	DLS4SP5AN21X				
	09/09									.750 19.05	DLS1SP5AN23X	DLS1SP5AN23X
	15/15					DLS2SP5AN23X	DLS2SP5AN23X					
	25/25					DLS3SP5AN23X	DLS3SP5AN23X					
	37/37					DLS4SP5AN23X	DLS4SP5AN23X					

Shell: Steel nickel plated  
Quality class 3 (A) = 50 mating cycles

## D-SUB CONNECTORS Standard

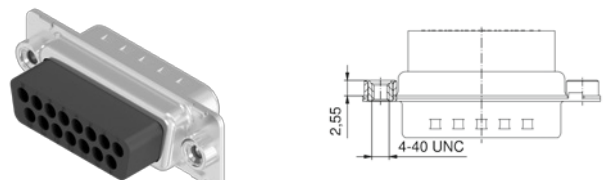
Crimp body (without contacts)  
For AWG 24-20 and AWG 28-24 crimp contacts

Through-hole  $\varnothing$  3 mm

	No. of poles	Working voltage [V]	UL-File	Part No.	
				Socket contact	Plug contact
	09	125	E202784	164X11769X	163X10019X
	15			164X11779X	163X10029X
	25			164X11789X	163X10039X
	37			164X11799X	163X10049X
	50			164X11809X	163X10059X

Shell: Steel tin plated  
On request:  
• Brass tin plated or stainless steel  
• M3 thread

4-40 UNC threaded insert

	No. of poles	Working voltage [V]	UL-File	Part No.	
				Socket contact	Plug contact
	09	125	E202784	DSS1XSXXG04X	DSS1XPXXG04X
	15			DSS2XSXXG04X	DSS2XPXXG04X
	25			DSS3XSXXG04X	DSS3XPXXG04X
	37			DSS4XSXXG04X	DSS4XPXXG04X
	50			DSS5XSXXG04X	DSS5XPXXG04X



## D-SUB CONNECTORS Standard


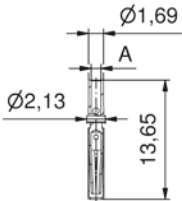
### Crimp-contacts, precision machined

Quality class 3 (A) = 50 mating cycles  
 Quality class 1 (C) = 500 mating cycles  
 On request:  
 • Female/Male contact quality class 1  
 (Closed entry version only in quality class 3)

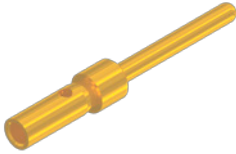
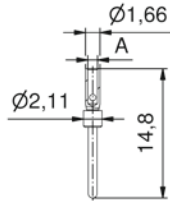
#### Female contact

Quantity [pcs]	AWG	Current rating [A]	Crimp inner $\varnothing$ A = [mm]	Quality class	Loose contacts	Part No.
500	24-20	7.5	1,12	3	✓	162A18709X
100						16-001653
500	28-24	5	0,64	3	✓	162A18719X
100						16-001663

#### Female contact closed entry

 	24-20	7.5	1,12	1	✓	132C15019X
	100					
	28-24	5	0,6			

#### Male contact

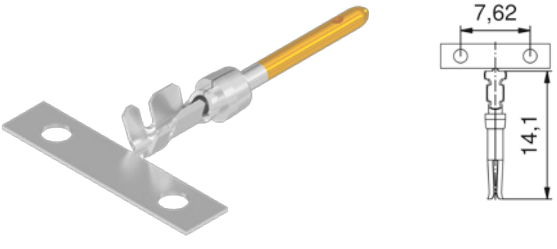
 	24-20	7.5	1,12	3	✓	161A18299X
	100					
500	28-24	5	0,64	3	✓	161A18309X
100						16-001683

## D-SUB CONNECTORS Standard

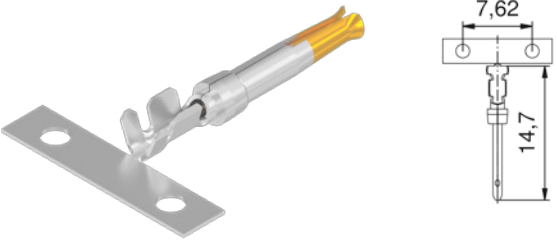
### Crimp-contacts, stamped

Quality class 3 (A) = 50 mating cycles  
On request:  
• Quality class 1 (C) = 500 mating cycles

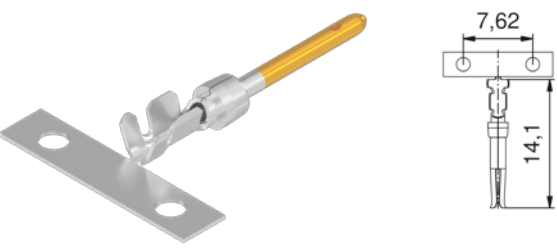
#### Female contact, AWG 24-20

	Quantity [pcs]	Current rating [A]	Loose contacts	Small reel wheeled left	Big reel wheeled left	Big reel wheeled right	Quality class	Part No.
	500	7.5	✓				3	162A11849X
					✓			
	10000				✓			162A11819X
						✓		162A11829X

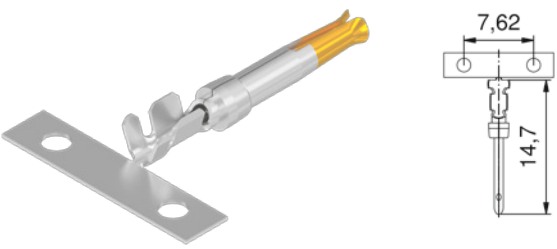
#### Male contact, AWG 24-20

	500	7.5	✓				3	161A13399X
					✓			
	10000				✓			161A13369X
						✓		161A13379X

#### Female contact, AWG 28-24

	500	5	✓				3	162A11889X
					✓			
	10000				✓			162A11859X
						✓		162A11869X

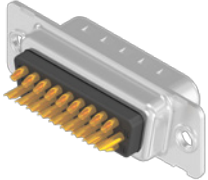
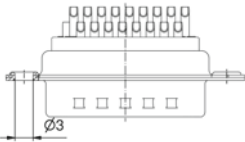
#### Male contact, AWG 28-24

	500	5	✓				3	161A13439X
					✓			
	10000				✓			161A13409X
						✓		161A13419X

## D-SUB CONNECTORS High Density

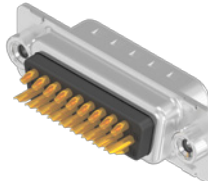
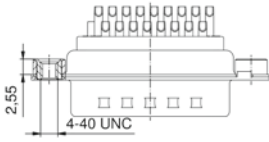
Solder cup  
Precision machined contacts, AWG 22

Through-hole  $\varnothing$  3 mm

 	No. of poles	Current rating [A]	Working voltage [V]	UL-File	Quality class	Part No. Socket contact	Part No. Plug contact
	15	3 (UL VDE) / 2.5 (CSA)	60	E202784	3	164A17009X	163A16599X
	26					164A17019X	163A16609X
	44					164A17029X	163A16619X
	62					164A17039X	163A16629X
	78					164A17049X	163A16639X

Shell: Steel tin plated  
Quality class 3 (A) = 50 mating cycles  
On request:  
• Brass tin plated or stainless steel  
• Quality class 1 (C) = 500 mating cycles  
• M3 thread

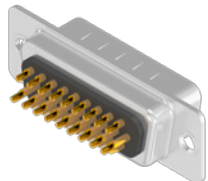
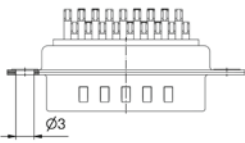
4-40 UNC threaded insert

 	No. of poles	Current rating [A]	Working voltage [V]	UL-File	Quality class	Part No. Socket contact	Part No. Plug contact
	15	3 (UL VDE) / 2.5 (CSA)	60	E202784	3	164A17059X	163A16649X
	26					164A17069X	163A16659X
	44					164A17079X	163A16669X
	62					164A17089X	163A16679X
	78					164A17099X	163A16689X

## D-SUB CONNECTORS High Density

Solder cup  
Stamped contacts, AWG 22

Through-hole  $\varnothing$  3 mm

 	No. of poles	Current rating [A]	Working voltage [V]	UL-File	Quality class	Part No. Socket contact	Part No. Plug contact
	15	3	60		3	302A10129X	301A10129X
	26					302A10139X	301A10139X
	44					302A10149X	301A10149X
	62					302A10159X	301A10159X
	78					302A11329X	301A11019X

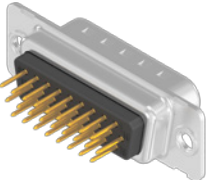
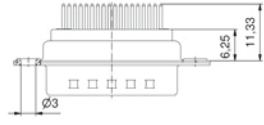
Shell: Steel nickel plated  
Quality class 3 (A) = 50 mating cycles

## D-SUB CONNECTORS High Density


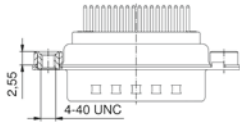
Solder pin, straight  
Precision machined contacts

Shell: Steel tin plated  
Quality class 3 (A) = 50 mating cycles  
On request:  
• Brass tin plated or stainless steel  
• Quality class 1 (C) = 500 mating cycles  
• M3 thread

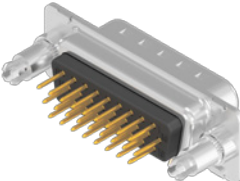
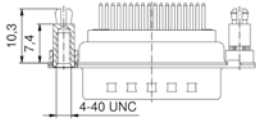
### Through-hole Ø 3 mm

 	No. of poles	Current rating [A]	Working voltage [V]	UL-File	Quality class	Part No. Socket contact	Part No. Plug contact
	15	3 (UL, VDE) / 2.5 (CSA)	60	E202784	3	164A17159X	163A16749X
26	164A17169X					163A16759X	
44	164A17179X					163A16769X	
62	164A17189X					163A16779X	
78	164A17199X					163A16789X	

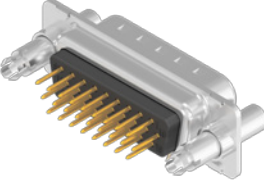
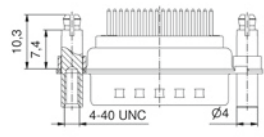
### 4-40 UNC threaded insert

 	No. of poles	Current rating [A]	Working voltage [V]	UL-File	Quality class	Part No. Socket contact	Part No. Plug contact
	15	3 (UL, VDE) / 2.5 (CSA)	60	E202784	3	164A17209X	163A16799X
26	164A17219X					163A16809X	
44	164A17229X					163A16819X	
62	164A17239X					163A16829X	
78	164A17249X					163A16839X	

### 4-40 UNC threaded rear spacer clip for PCB 1.6 mm

 	No. of poles	Current rating [A]	Working voltage [V]	UL-File	Quality class	Part No. Socket contact	Part No. Plug contact
	15	3 (UL, VDE) / 2.5 (CSA)	60	E202784	3	164A17359X	163A16949X
26	164A17369X					163A16959X	
44	164A17379X					163A16969X	
62	164A17389X					163A16979X	
78	164A17399X					163A16989X	

### 4-40 UNC front, threaded rear spacer clip for PCB 1.6 mm

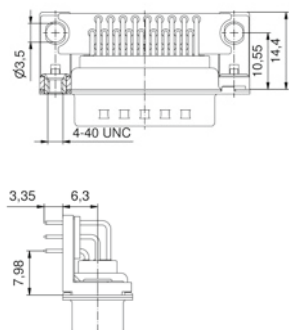
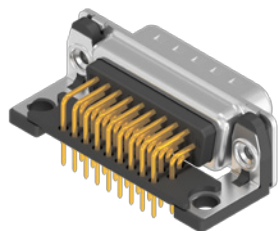
 	No. of poles	Current rating [A]	Working voltage [V]	UL-File	Quality class	Part No. Socket contact	Part No. Plug contact
	15	3 (UL, VDE) / 2.5 (CSA)	60	E202784	3	164A17459X	163A17049X
26	164A17469X					163A17059X	
44	164A17479X					163A17069X	
62	164A17489X					163A17079X	
78	164A17499X					163A17089X	

## D-SUB CONNECTORS High Density

Solder pin, angled, .350"/7.98 mm  
Precision machined contacts, plastic bracket

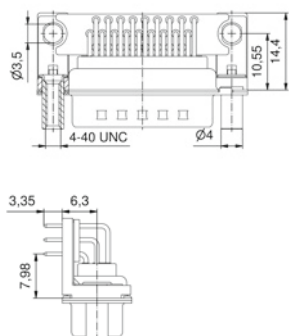
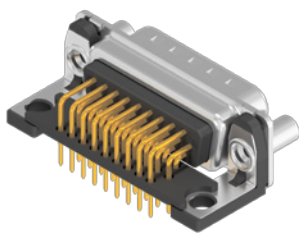
Shell: Steel tin plated  
Quality class 3 (A) = 50 mating cycles  
On request:  
• Brass tin plated or stainless steel  
• Quality class 1 (C) = 500 mating cycles  
• M3 thread

### Grounding strap, 4-40 UNC threaded insert



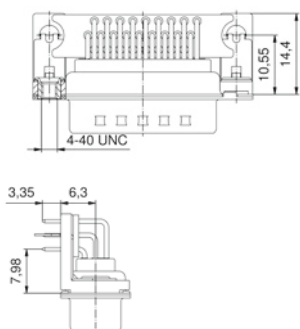
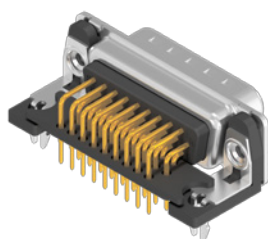
No. of poles	Current rating [A]	Working voltage [V]	UL-File	Quality class	Part No. Socket contact	Part No. Plug contact
15	3 (UL, VDE) / 2.5 (CSA)	60	E202784	3	164A18019X	163A17609X
26					164A18029X	163A17619X
44					164A18039X	163A17629X
62					164A18049X	163A17639X

### Grounding strap, 4-40 UNC front spacer



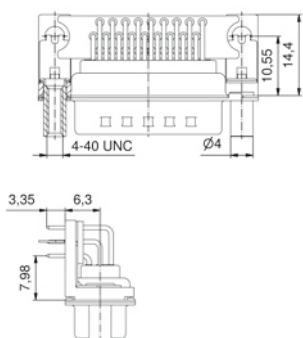
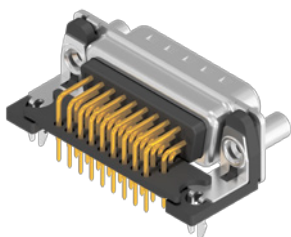
15	3 (UL, VDE) / 2.5 (CSA)	60	E202784	3	164A18099X	163A17689X
26					164A18109X	163A17699X
44					164A18119X	163A17709X
62					164A18129X	163A17719X

### Clip for PCB 1.6 mm, 4-40 UNC threaded insert



15	3 (UL, VDE) / 2.5 (CSA)	60	E202784	3	164A20929X	163A20489X
26					164A20939X	163A20499X
44					164A20949X	163A20509X
62					164A20959X	163A20519X

### Clip for PCB 1.6 mm, 4-40 UNC front spacer



15	3 (UL, VDE) / 2.5 (CSA)	60	E202784	3	164A21009X	163A20569X
26					164A21019X	163A20579X
44					164A21029X	163A20589X
62					164A21039X	163A20599X



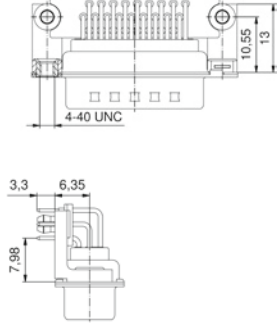
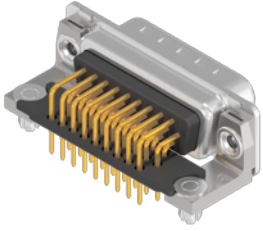
**D-SUB CONNECTORS**  
High Density

Solder pin, angled, .350" / 7.98 mm  
Precision machined contacts, metal bracket

Clip for PCB 1.6 mm, 4-40 UNC threaded insert

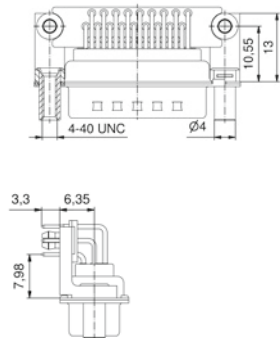
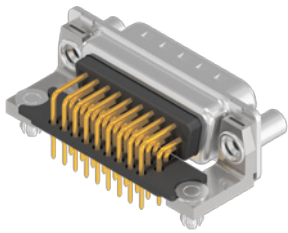
No. of poles	Current rating [A]	Working voltage [V]	UL-File	Quality class	Part No.	
					Socket contact	Plug contact
15	3 (UL, VDE) / 2.5 (CSA)	60	E202784	3	164A18179X	163A17769X
26					164A18189X	163A17779X
44					164A18199X	163A17789X
62					164A18209X	163A17799X
78					164A18629X	163A18219X

Shell: Steel tin plated  
Quality class 3 (A) = 50 mating cycles  
On request:  
• Brass tin plated or stainless steel  
• Quality class 1 (C) = 500 mating cycles  
• M3 thread



Clip for PCB 1.6 mm, 4-40 UNC front spacer

15	3 (UL, VDE) / 2.5 (CSA)	60	E202784	3	164A18259X	163A17849X
26					164A18269X	163A17859X
44					164A18279X	163A17869X
62					164A18289X	163A17879X
78					164A18649X	163A18239X



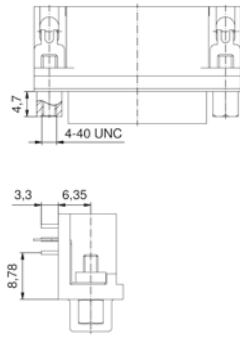
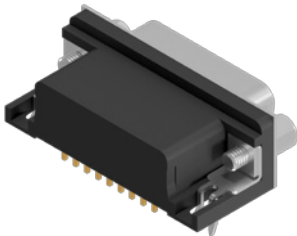
**D-SUB CONNECTORS**  
High Density

Solder pin, angled, .350" / 8.78 mm  
Precision machined contacts, plastic bracket

Clip for PCB 1.6 mm, 4-40 UNC front spacer

No. of poles	Current rating [A]	Working voltage [V]	UL-File	Quality class	Part No.	
					Socket contact	Plug contact
15	3	60		3	302A10869X	301A10869X
26					302A10879X	301A10879X
44					302A10889X	301A10889X
62					302A10899X	301A10899X
78					302A11629X	301A11369X

Shell: Steel nickel plated  
Quality class 3 (A) = 50 mating cycles



## D-SUB CONNECTORS High Density

Crimp body (without contacts)  
For AWG 28-22 crimp contacts

Through-hole  $\varnothing$  3 mm



No. of poles

Working voltage [V]

UL-File

Shell: Steel tin plated  
On request:  
• Brass tin plated or stainless steel

Part No. Socket contact

Part No. Plug contact

15

26

44

62

78

60

E202784

164X11949X

163X10169X

164X11959X

163X10179X

164X11969X

163X10189X

164X11979X

163X10199X

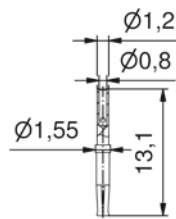
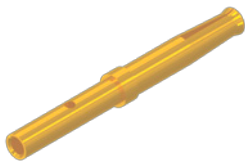
164X11989X

163X10209X

## D-SUB CONNECTORS High Density

Crimp-contacts, precision machined

Female contact, AWG 28-22



Quantity [pcs]

Current rating [A]

Loose contacts

Quality class

Quality class 3 (A) = 50 mating cycles  
On request:  
• Quality class 1 (C) = 500 mating cycles

Part No.

500

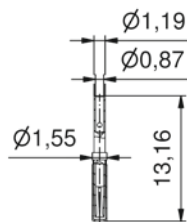
3

✓

3

162A18419X

Female contact closed entry, AWG 28-22



500

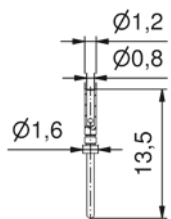
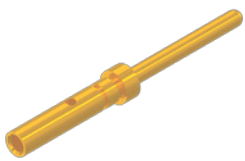
3

✓

3

16-000693

Male contact, AWG 28-22



500

3

✓

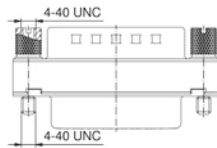
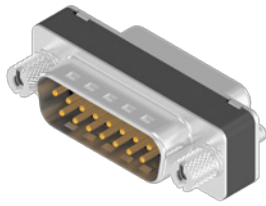
3

161A18009X

## D-SUB CONNECTORS Standard

Interface adapter, connector saver  
Plug connector - socket connector

4-40 UNC threaded lock



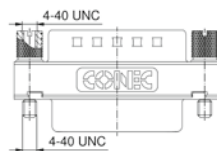
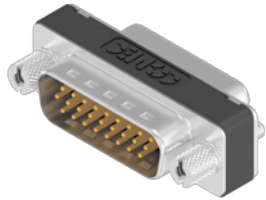
No. of poles	Current rating [A]	Working voltage [V]	UL-File	Quality class	Part No.
09	7.5 (UL) 5 (CSA) VDE	125	E202784	3	163A50009X
15					163A50019X
25					163A50029X
37					163A50039X
50					163A50049X

Shell: Steel tin plated  
Quality class 3 (A) = 50 mating cycles  
On request:  
• Quality class 1 (C) = 500 mating cycles  
• M3 thread

## D-SUB CONNECTORS High Density

Interface adapter, connector saver  
Plug connector - socket connector

4-40 UNC threaded lock



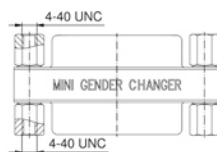
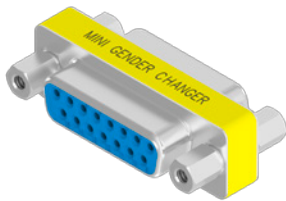
No. of poles	Current rating [A]	Working voltage [V]	UL-File	Quality class	Part No.
15	3 (UL, VDE) / 2.5 (CSA)	60	E202784	3	164A03399X
26					164A03919X
44					164A03929X
62					164A03939X
78					DAH5XAAAR04X

Shell: Steel tin plated  
Quality class 3 (A) = 50 mating cycles  
On request:  
• Quality class 1 (C) = 500 mating cycles  
• M3 thread

## D-SUB CONNECTORS Standard

Interface adapter, gender changer  
Socket connector - socket connector

4-40 UNC threaded lock

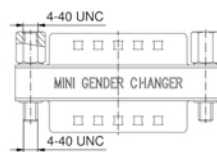


No. of poles	Current rating [A]	Working voltage [V]	UL-File	Quality class	Part No.
09	3	125		3	320X12519X
15					320X12539X
25					320X10559X
37					320X12559X

Shell: Steel nickel plated  
Quality class 3 (A) = 50 mating cycles

Interface adapter, gender changer  
Plug connector - plug connector

4-40 UNC threaded lock



No. of poles	Current rating [A]	Working voltage [V]	UL-File	Quality class	Part No.
09	3	125		3	320X12509X
15					320X12529X
25					320X10549X
37					320X12549X