



# RECTANGULAR CONNECTORS

---

**EDAC**



# Rectangular Connectors

EDAC Rack & Panel connectors offer a high reliability connection, ideal where a large number of wires are interconnected to a panel. Available in seven body sizes ranging from 14 to 120 contact positions. The hermaphroditic contact design provides a gas tight connection with superior shock and vibration resistance. Ease of mating is facilitated with the use of an actuating screw and lock nut.

## Features

- Industry standard connector with highly dependable contacts
- Hermaphroditic contact design for no-fail interconnections
- Gold over nickel plating for wire hole, PCB, wire-wrap and crimp contacts
- In sizes of 14 to 120 positions, with actuating screw or locknut and polarizing hardware
- Plastic and metal covers with cable clamps for strain relief
- Tools available for contact installation, removal, crimping and polarization



# EDAC

[www.edac.net](http://www.edac.net)    

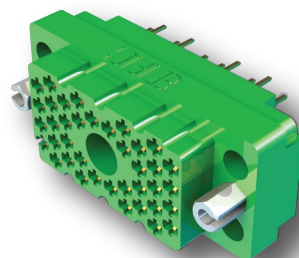
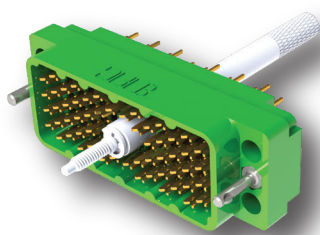
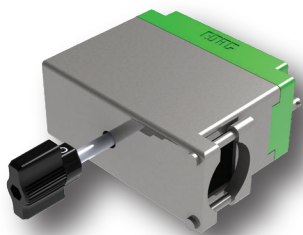


## Rack & Panel Connectors

Series	No. of Contacts	Contact Options	Ins. Material Options	Cover Options	Hardware Options	Polarization
516	20-120	7	3	7	5	Yes
519	14 or 36	7	1	7	5	Yes
556	3	7	1	N/A	N/A	Yes

Ultimate high continuity backplane connector

Shock and vibration proof solution!



**Tel: +1 416 754 3322**  
**customerservice@edac.net**

Established in 1966, EDAC soon became a world leader in providing connectors for Card Edge and Rack & Panel applications. Since then, we have expanded our product offering to include one of the widest ranges of interconnect solutions in the world. Products include D-Sub, Modular Jacks RJ45, USB, HDMI, Inline Plug & Socket, Headers, Waterproof Connectors and Custom Solutions. Our dedicated teams of engineering, customer service, field support, and global distribution partners allow EDAC the opportunity to support many unique applications globally.

www.edac.net    

**Connect with Us . . . Experience Makes the Difference**