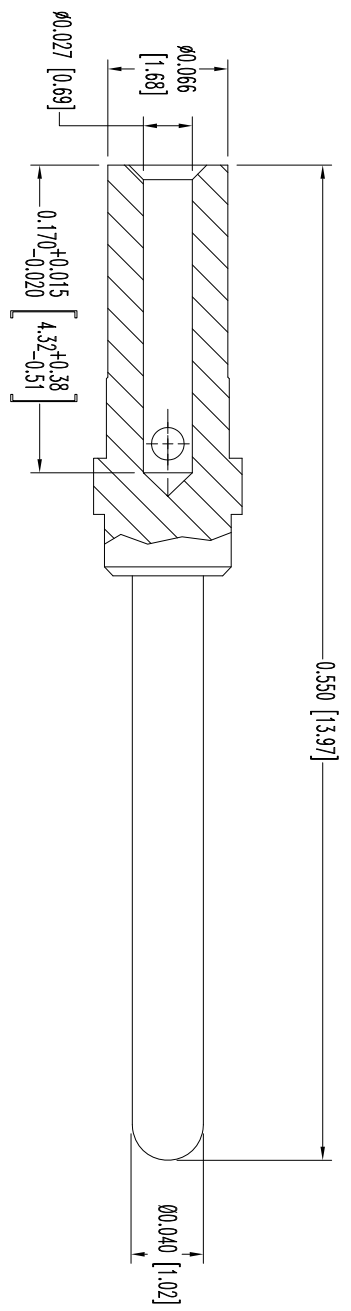


THIS DRAWING CONTAINS INFORMATION PROPRIETARY TO POSITRONIC INDUSTRIES INC. THE DATA ON THIS DRAWING TO BE RELIABLE SINCE THE USER EMPLOYER'S SUCH INFORMATION AT HIS OWN DISCRETION RESULTS OBTAINED OR DAMAGES INCURRED FROM USE OF SUCH INFORMATION IN WHOLE OR IN PART.




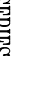
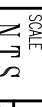




DATE	REV	REVISION RECORD	APP	DR	CK
4-23-14	NC	ECO 43021	TK	MP	COLB

SK16058



NOTES:

1. MATERIALS AND FINISHES:
CONTACT: PRECISION MACHINED COPPER ALLOY, GOLD FLASH OVER NICKEL PLATE.
2. DETAILED PRODUCT, ELECTRICAL, AND MECHANICAL INFORMATION IS AVAILABLE IN THE LATEST SPACE D PRODUCT PUBLICATION. VISIT CONNECTPOSITRONIC.COM/PRODUCTS/62/HIGHPERFORMANCE-SUBMINIATURE OR CONNECTPOSITRONIC.COM.
3. CONTACTS ARE COMPLIANT TO THE CURRENT ROHS DIRECTIVE.
4. DIMENSIONS ARE IN INCHES [MILLIMETERS].

 <p>POSITRONIC INDUSTRIES INC. www.connectpositronic.com</p>		DATE		DRAWING NUMBER		REV.	
		4-23-14		SK16058			NC
 <p>DECIMAL TOL. ± 0.015 [0.38]</p>		 <p>ANGULAR TOL. ± 5°</p>		 <p>SCALE N.T.S.</p>		 <p>DRAWN BY MP</p>	
 <p>TITLE SND SERIES</p>		 <p>APPROVED BY TK</p>		 <p>FSCM 28198</p>		 <p>TITLE MC6026D/AA</p>	