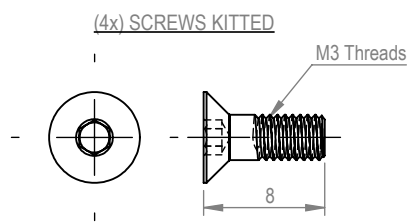
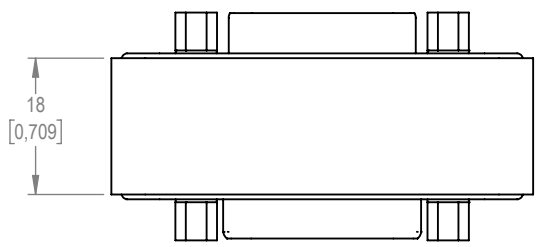
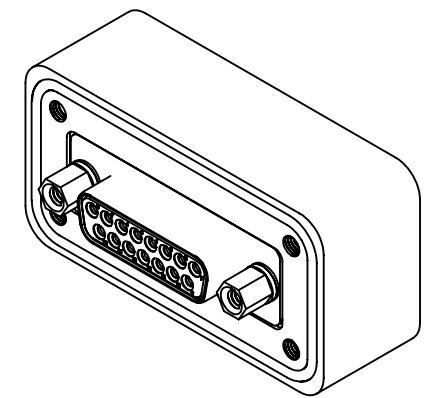
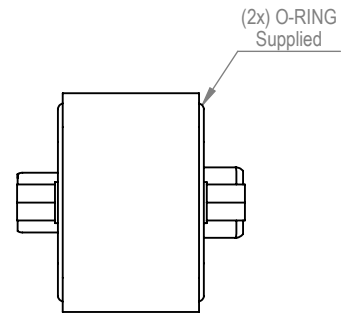
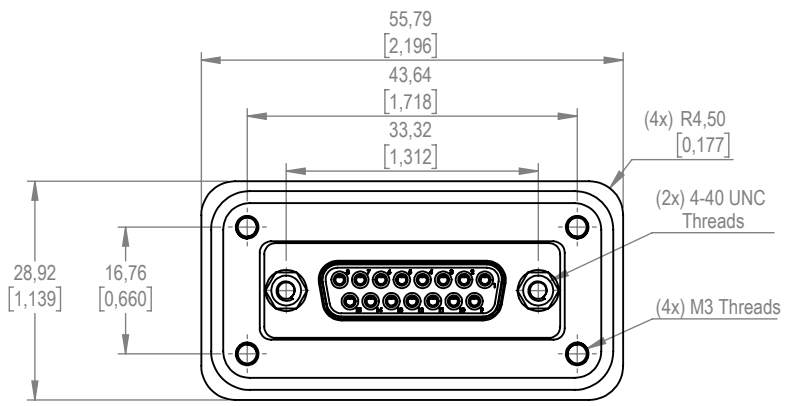


DATE	REV	REVISION RECORD	APP	DR	CK
09/01/2017	A01	ECO CH 2723	R.B	A.T	



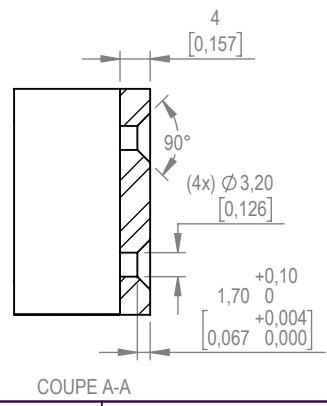
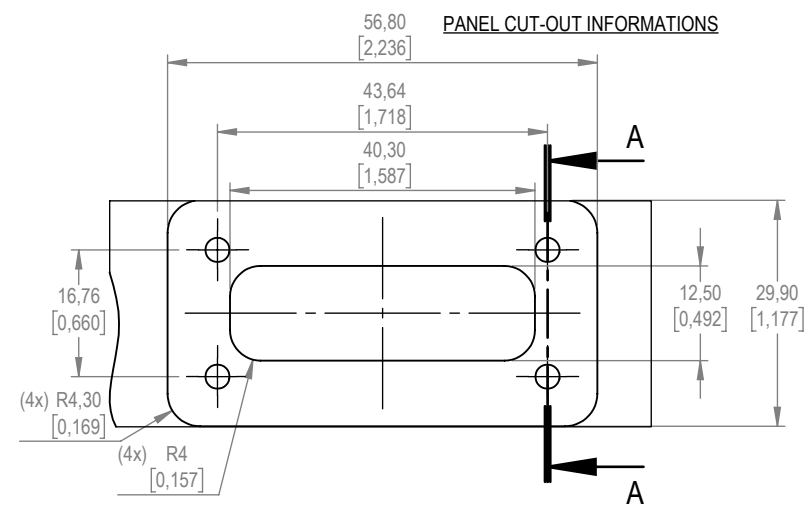
NOTES :

1.MATERIAL AND FINISHES:

- INSULATOR : GLASS-FILLED DAP PER ASTM-D-5948 OR POLYESTER GLASS-FILLED PER ASTM D5927, UL94V0, ASTM E-595, NASA-RP-1124.
- CONTACTS M/S: PRECISION MACHINED COPPER ALLOY WITH 1.27µ [0.000050 inch] GOLD OVER COPPER PLATE.
- SHELLS : STAINLESS STEEL, PASSIVATED.
- HOUSING : ALUMINIUM ALLOY, GOLDEN BROWN CONVERSION COATING.
- JACKSCREWS : STAINLESS STEEL, PASSIVATED.
- WASHERS: STAINLESS STEEL, PASSIVATED.
- O-RING : FLUOROCARBON, BLACK COLOR. (ONE MOUNTING AND ONE FOR SPARE PART).
- FIXATION SCREWS : STAINLESS STEEL, PASSIVATED (KITTED).
- DUST COVER: CONDUCTIVE LOW DENSITY POLYETHYLENE (KITTED).

2.DETAIL PRODUCT, ELECTRICAL AND MECHANICAL INFORMATION IS AVAILAIBLE IN THE LATEST XAVAC PRODUCT AT CONNECTPOSITRONIC.COM.

PANEL CUT-OUT INFORMATIONS



XAVAC15M/SI.0			
XAVAC15M/SI.0/AA		RoHS COMPLIANT TO THE CURRENT RoHS DIRECTIVE.	
DRAWN BY A.Thurette	3rd Angle	 ON THE DRAWING TO BE RELIABLE. THE USER EMPLOYS SUCH INFORMATION AT HIS OWN DISCRETION AND RISK. POSITRONIC ASSUMES NO RESPONSIBILITY FOR RESULTS OBTAINED OR DAMAGES INCURRED FROM USE OF SUCH INFORMATION IN WHOLE OR IN PART.	 CONNECTPOSITRONIC.COM
APPROVED BY R.Biane	SCALE N.T.S.		
<b>TOLERANCES</b> ±0.03mm [0.001 INCHES]FOR MALE CONTACT MATING DIAMETERS ±0.08mm [0.003 INCHES]FOR CONTACT TERMINATION DIAMETERS ±0.13mm [0.005 INCHES]FOR ALL OTHER DIAMETERS ±0.38mm [0.005 INCHES]FOR ALL OTHER DIMENSIONS ±5° FOR ALL ANGLES <b>DIMENSION ARE IN MILLIMETERS [INCHES]</b>		<b>PART NUMBER</b> XAVAC15M/SI.0 / XAVAC15M/SI.0/AA <b>SERIES</b> XAVAC SERIES	
DATE 09/01/2017	SHEET SHEET 1 OF 1	REV A01	